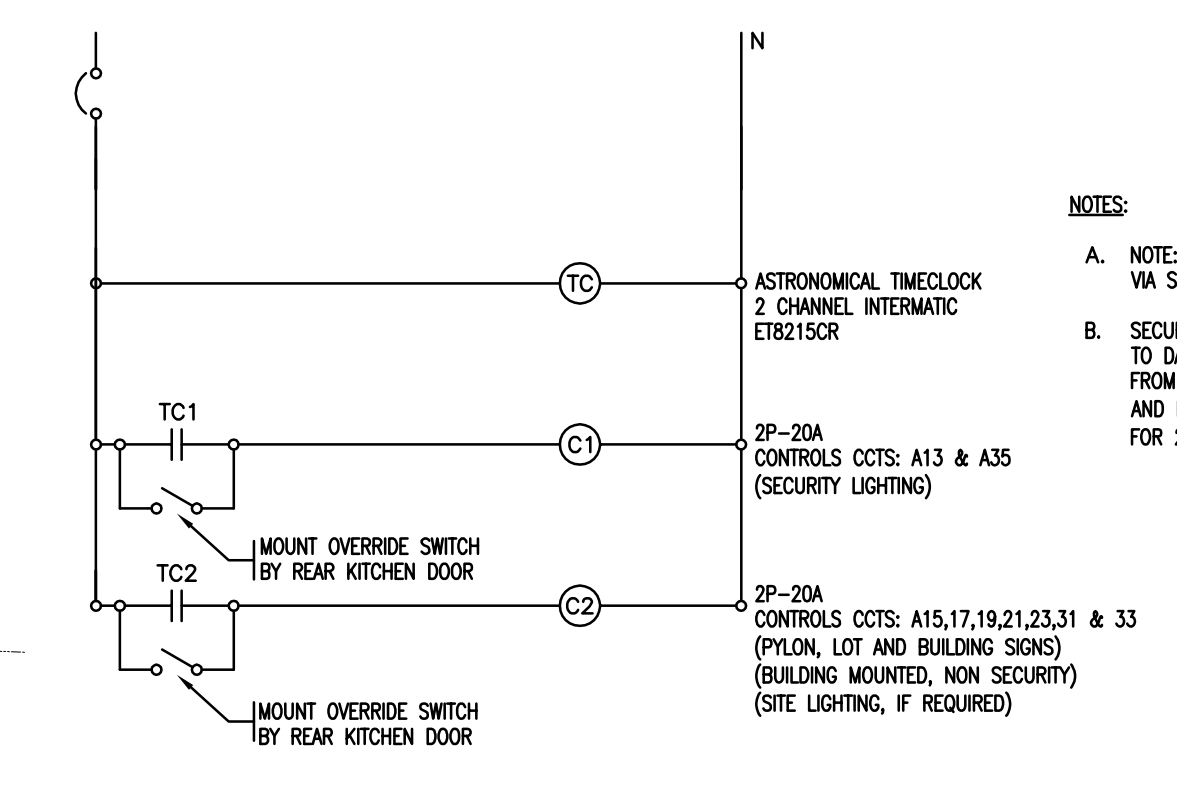
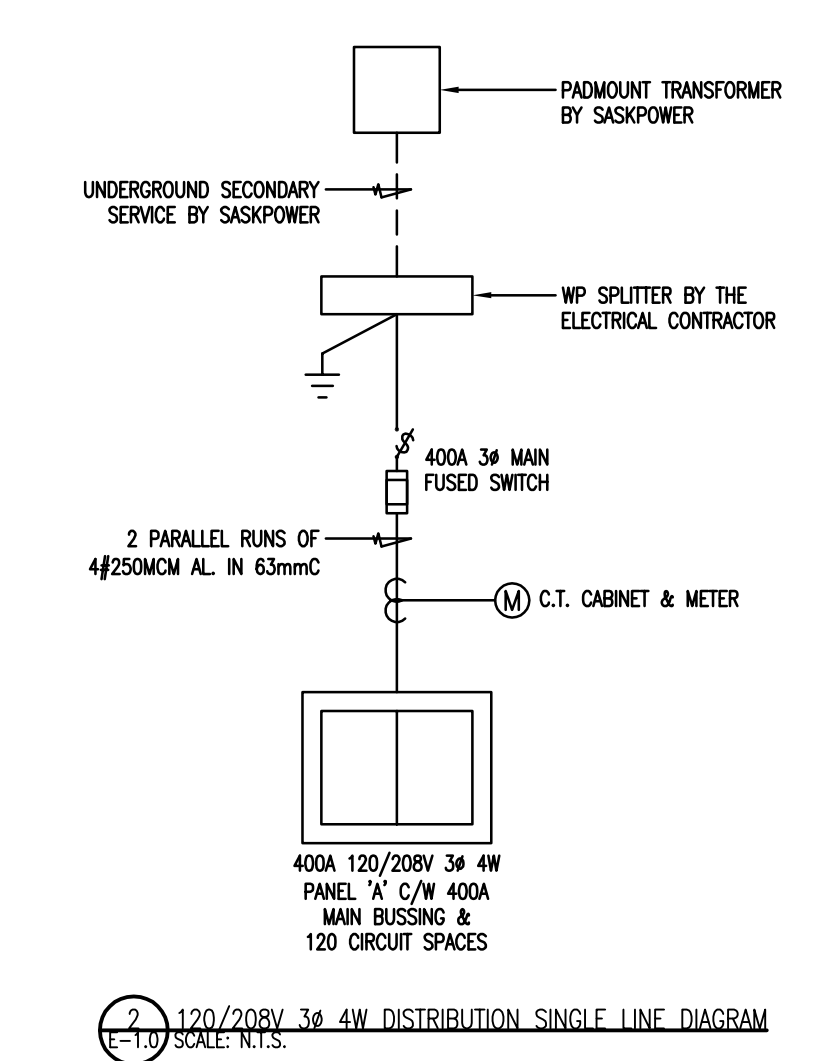


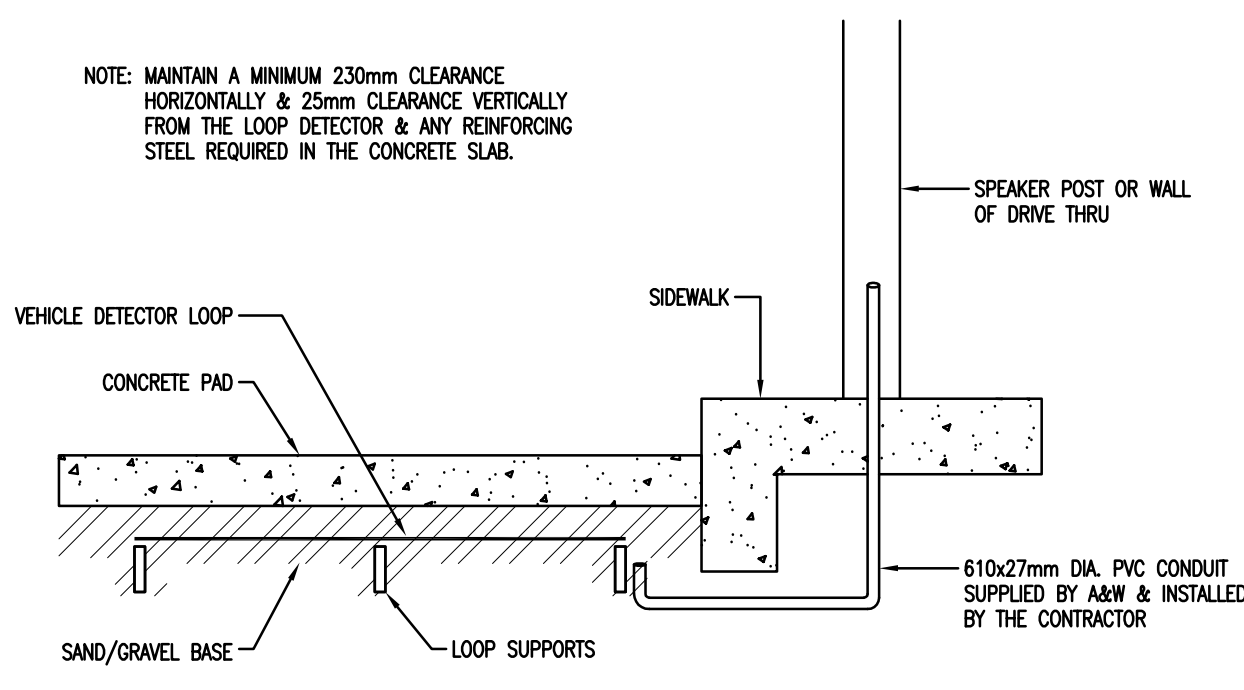
Association of Professional Engineers & Geoscientists of Saskatchewan
CERTIFICATE OF AUTHORIZATION
PWA Engineering (2013) Ltd.
 Number C0033

Permission to Consult held by:
 Discipline Sk. Reg. No. Signature
ELECTRICAL 4294
ELECTRICAL 12318

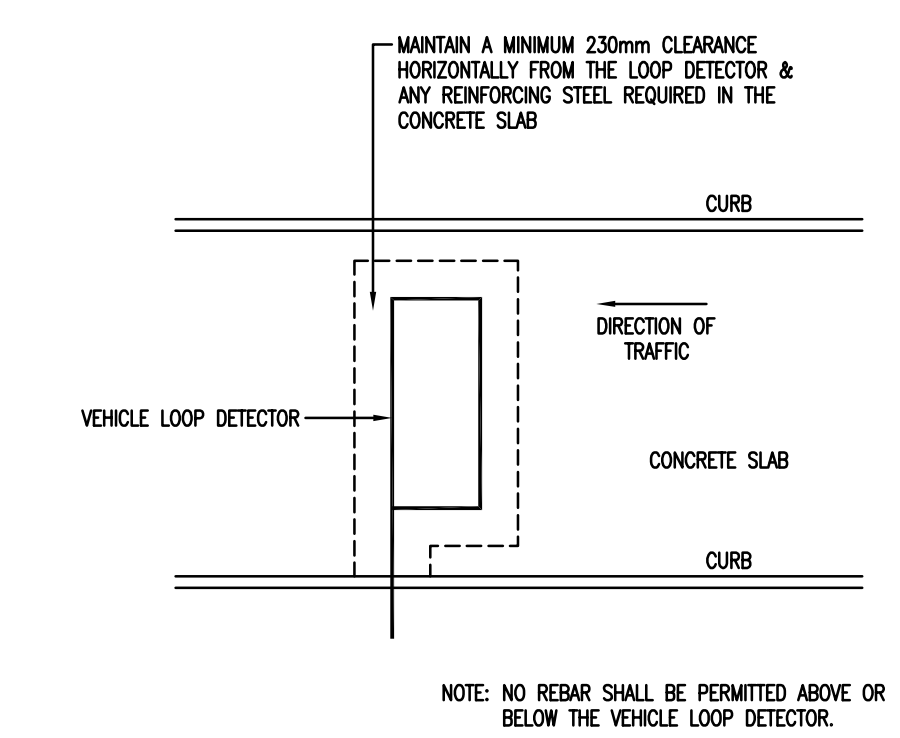
LEGEND	
SYMBOL	DESCRIPTION
	LINEAR SOURCE LIGHT FIXTURE - CEILING MOUNT
	LINEAR SOURCE LIGHT FIXTURE - WALL MOUNT
	POINT SOURCE LIGHT FIXTURE - SURFACE/WALL MOUNT
	SWITCH 3-WAY D=DIMMER K=KEYED T=TIMELOCK
	WALL SWITCH OCCUPANCY SENSOR
	DUPLEX RECEPTACLE; + = COUNTER HEIGHT
	DUPLEX RECEPTACLE; WP=WEATHERPROOF
	SURGE PROTECTED RECEPTACLE
	5-20R RECEPTACLE
	5-20R GFI RECEPTACLE
	JUNCTION BOX / DIRECT CONNECTION
	208 VOLT JUNCTION BOX / DIRECT CONNECTION
	NORMAL POWER PANEL AS INDICATED
	MOTOR
	DISCONNECT SWITCH
	HEATER B=BASEBOARD F=FORCE FLOW
	THERMOSTAT
	FIRE ALARM HORN/STROBE
	EMERGENCY BATTERY UNIT C/W LIGHTING HEADS
	REMOTE EMERGENCY LIGHTS, SINGLE & DOUBLE
	COMBINATION EXIT SIGN EMERGENCY BATTERY UNIT WITH HEADS
	EXIT LIGHT - SURFACE/WALL MOUNT; SHADING INDICATES LIT FACE
	TELEPHONE OUTLET
	STRUCTURED WIRING OUTLET; N=NUMBER OF DROPS IF NO NUMBER SHOWN, PROVIDE 2 DROPS
	SPEAKER - CEILING/WALL MOUNT



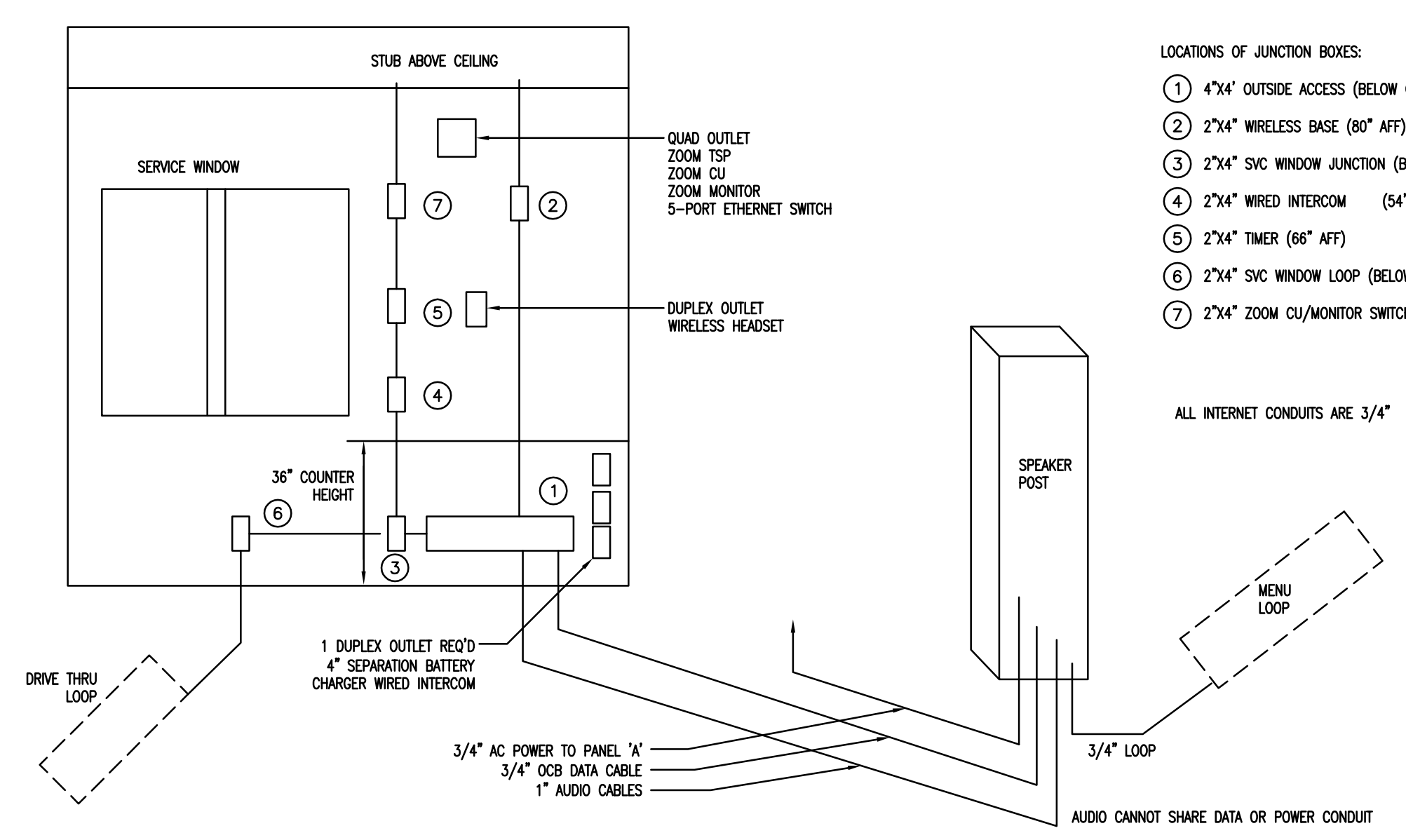
1 OUTSIDE LIGHTING CONTROL SCHEMATIC
 E-1.0 SCALE N.T.S.



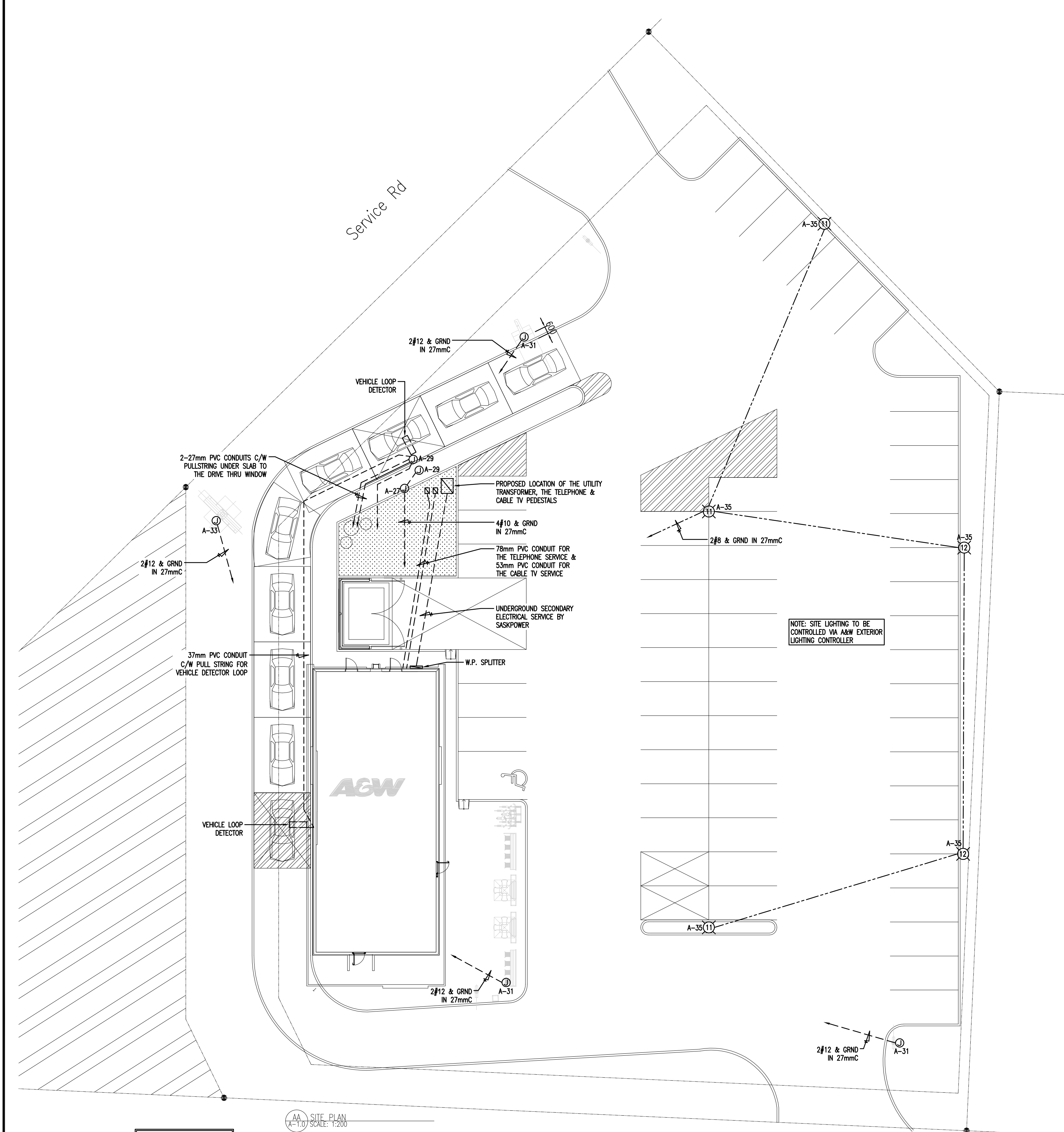
4 VEHICLE LOOP INSTALLATION DETAIL (ELEVATION)
 E-1.0 SCALE N.T.S.



5 VEHICLE LOOP DETECTOR INSTALLATION DETAIL (PLAN)
 E-1.0 SCALE N.T.S.



6 DRIVE THRU COMMUNICATION SCHEMATIC
 E-1.0 SCALE N.T.S.



1 ELECTRICAL SITE PLAN
 E-1.0 SCALE 1:200

SERVICE REQUIREMENTS:
 400AMP, 120/208V 3Ø 4W

No.	Description	Date
3	ISSUED FOR PERMIT & CONSTRUCTION	16.04.08
2	ISSUED FOR 90% REVIEW	16.03.18
1	ISSUED TO PROJECT ARCHITECT	15.10.30

REVISIONS

1. THIS DRAWING IS THE PROPERTY OF A&W FOOD SERVICES OF CANADA INC. & MAY NOT BE USED IN WHOLE OR IN PART FOR ANY PROJECT OTHER THAN THAT DESIGNATED HEREIN.
 2. DO NOT SCALE DRAWINGS - WRITTEN DIMENSIONS TAKE PRECEDENCE.
 3. CONTRACTOR TO VERIFY JOB SITE DIMENSIONS & CONDITIONS, REPORT ANY & ALL DISCREPANCIES TO THE OWNER & A&W IMMEDIATELY BEFORE PROCEEDING WITH WORK.
 4. ALL WORK TO CONFORM TO THE LATEST LOCAL BUILDING CODES, BY-LAWS, & NFPA REQUIREMENTS, IN ADDITION TO OTHER REGULATIONS HAVING JURISDICTION.

PWA ENGINEERING LTD.
 CONSULTING ELECTRICAL ENGINEERS
 #102 - 201 CENTRAL STREET
 SASKATOON, SK S0N 0T7
 TEL: (306) 944-8711
 FAX: (306) 944-8773

PRAKASH
 PRAKASH CONSULTING LTD
 STRUCTURAL ENGINEERS
 #4 - 210 15TH STREET EAST
 PRINCE ALBERT, SK S6V 1G2
 T 306 922 2101 F 306 763 0212

RNF VENTURES LTD.

811 CENTRAL AVENUE PH: (306) 763-3700
 PRINCE ALBERT, SK FX: (306) 763-4700
 S6V 4V2



A&W FOOD SERVICES OF CANADA INC.
 DESIGN & CONSTRUCTION

Project
A&W RESTAURANT
 2015 GFMGF CONCEPT DESIGN
 11401 RAILWAY AVE,
 NORTH BATTLEFORD, SK

Title
ELECTRICAL SITE PLAN & DETAILS

File Name
 8151E-1.0

Date Created
 JANUARY 14, 2016

Project Number
 14064

Drawn By
 BD/BB

Prototype Version
 2178L (2015 V1.1)

Page Number
 XXXXX

Consultant
 XXXXX

Scale
 AS SHOWN

E-1.0