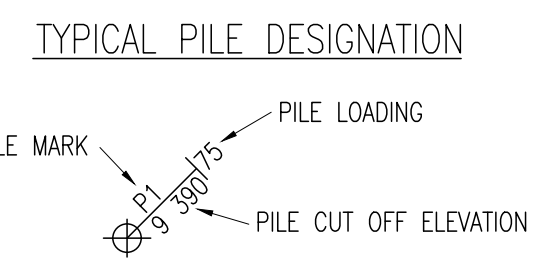


- FOUNDATION PLAN NOTES:**
- REFER TO GEOTECHNICAL REPORT FILE NO: PREPARED BY PMEL 11392 FOR ADDITIONAL INFORMATION.
  - DIMENSIONS ARE TO CENTER LINE OF PILE TYP.
  - GRADE BEAM ABOVE DENOTED BY: - - - - -
  - REFER TO THIS PAGE FOR PILE CAP SIZE AND REINF.

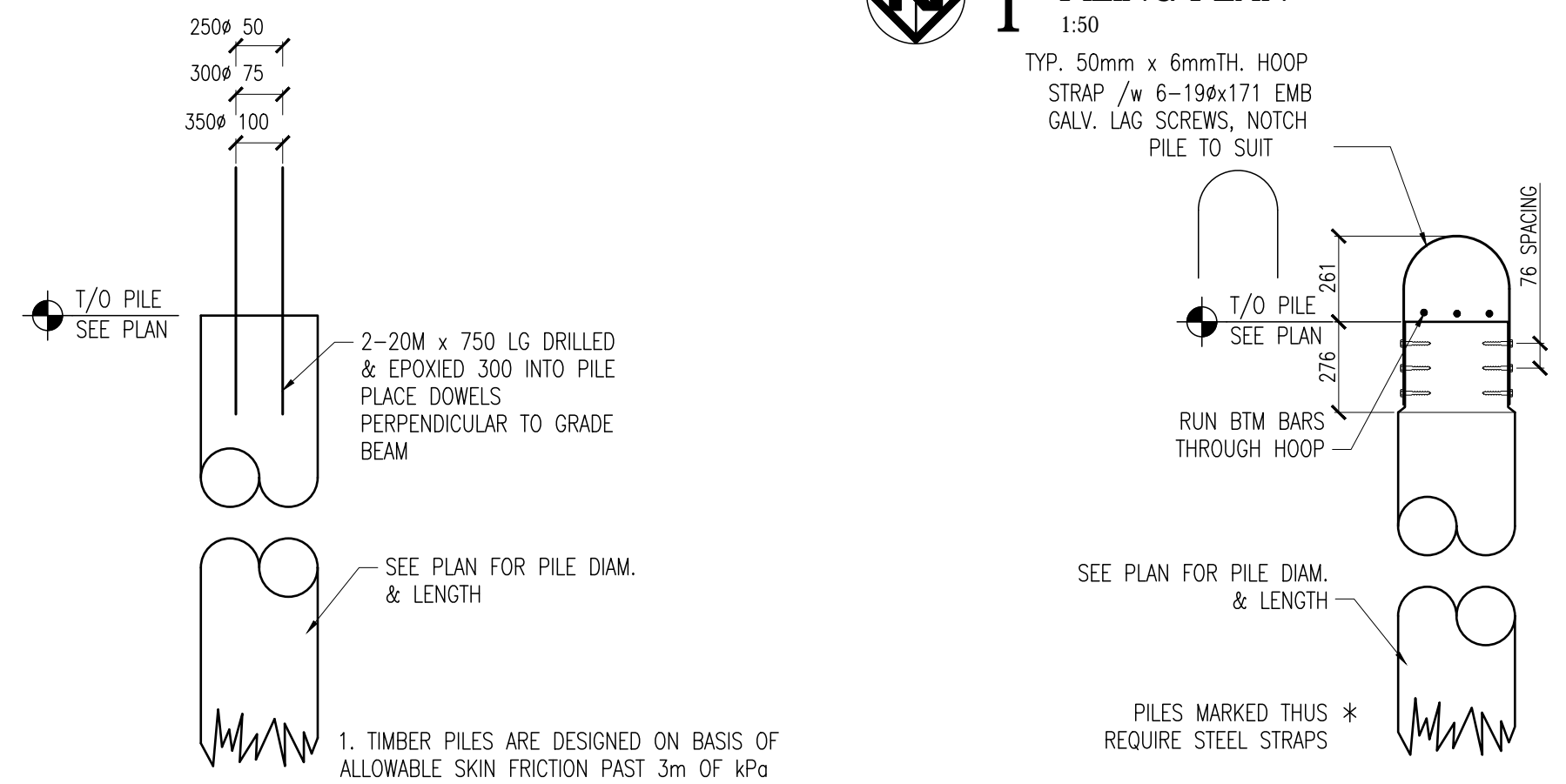


| TIMBER PILE SCHEDULE |               |             |               |
|----------------------|---------------|-------------|---------------|
| PILE MARK            | DIAMETER (mm) | LENGTH (mm) | CAPACITY (kN) |
| P1                   | 254           | 6096        | 78            |
| P2                   | 254           | 7620        | 108           |
| P3                   | 254           | 9144        | 161           |
| P4                   | 305           | 7620        | 129           |
| P5                   | 305           | 9144        | 193           |
| P6                   | 356           | 6096        | 110           |

| FOOTING SCHEDULE |              |       |       |  |                   |
|------------------|--------------|-------|-------|--|-------------------|
| MARK             | FOOTING SIZE |       |       | REINFORCEMENT  | TOP OF FTG. ELEV. |
|                  | LENGTH       | WIDTH | DEPTH |  |                   |
| F1               | VARIES       | 600   | 200   | 3-15M CONT. LONG DIRECTION<br>w/ 10M @ 406 o/c SHORT DIRECTION | 9 900             |

**1 PILING PLAN**  
1:50

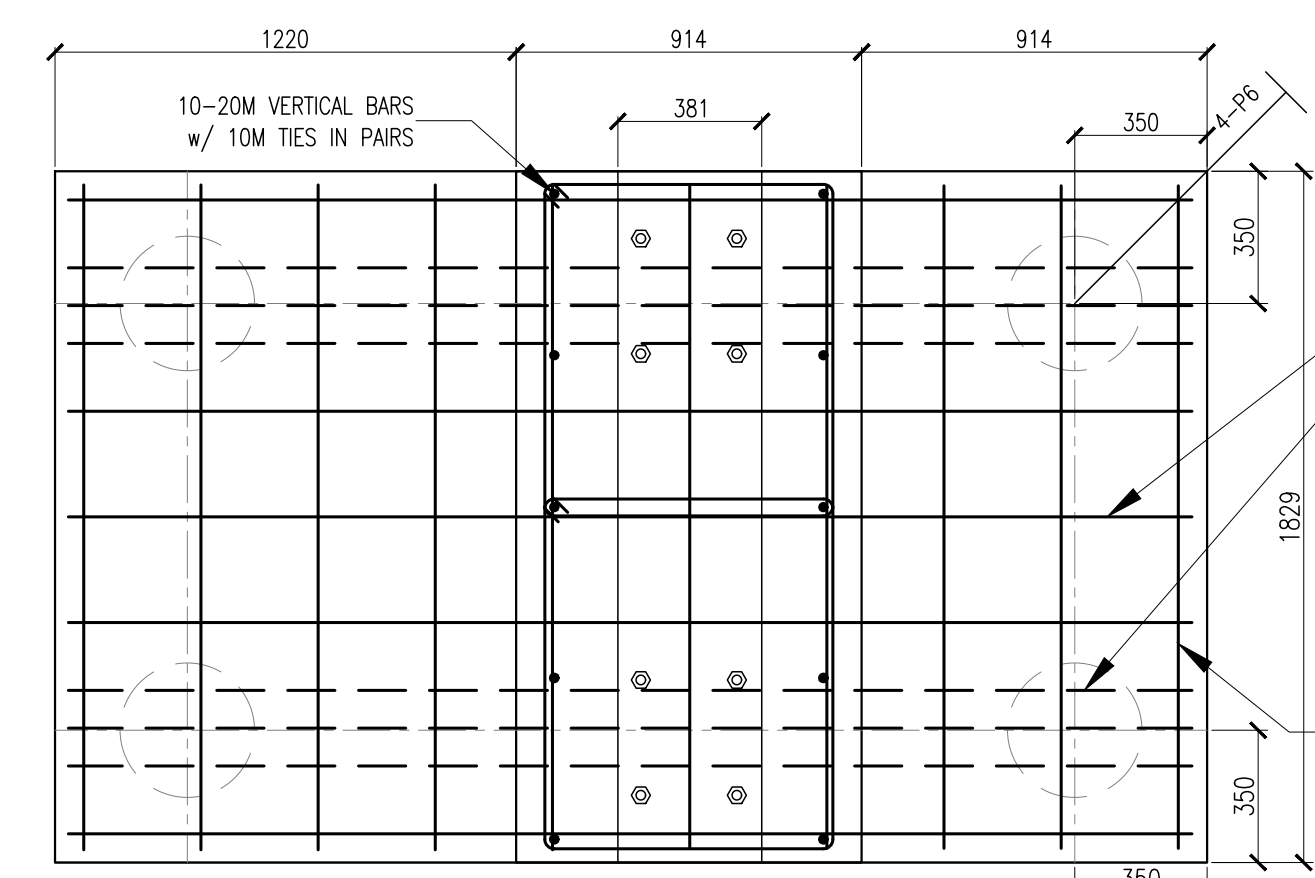
TYP. 50mm x 6mm TH. HOOP STRAP /w 6-19x171 EMB CALV. LAG SCREWS, NOTCH PILE TO SUIT



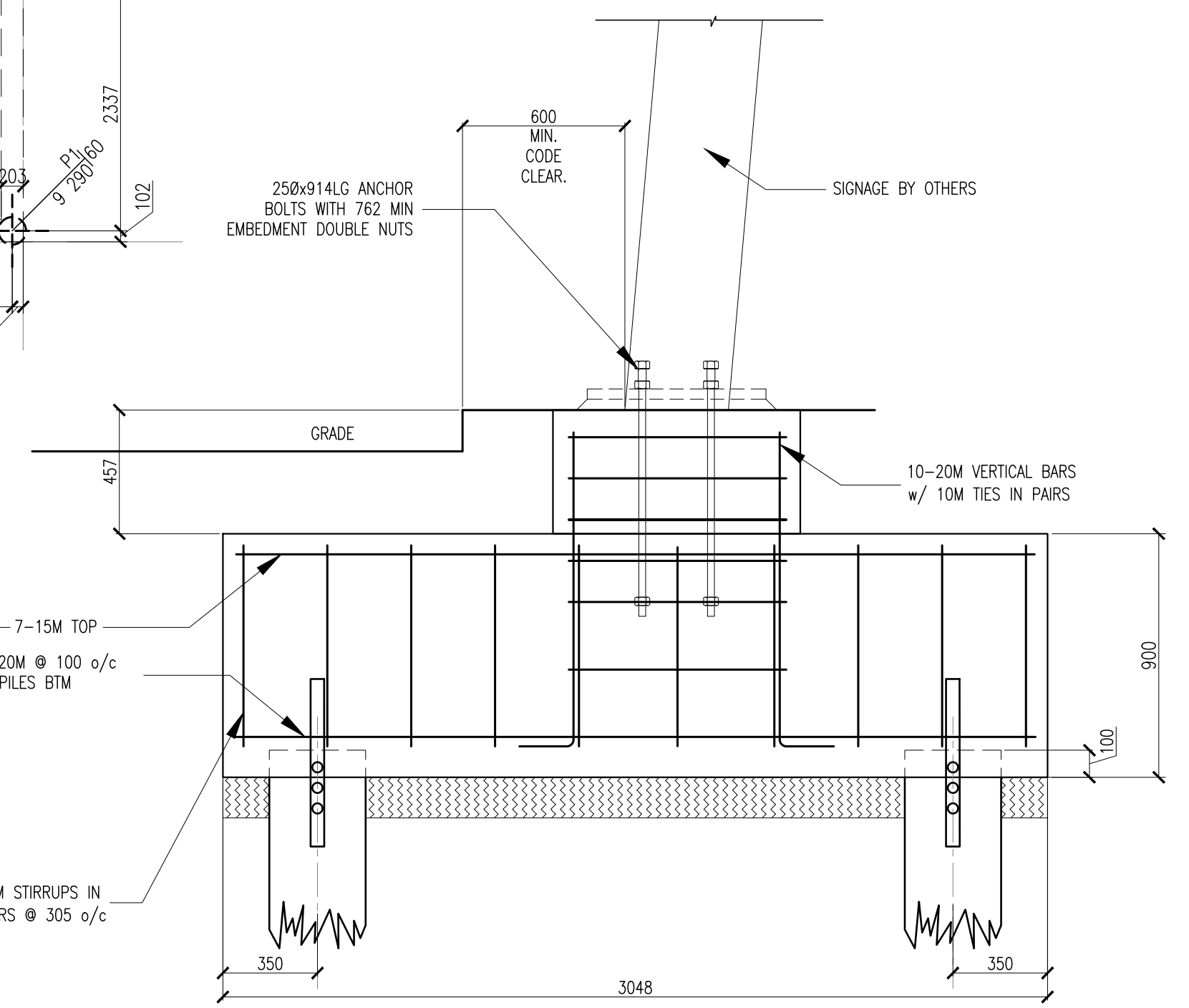
1. TIMBER PILES ARE DESIGNED ON BASIS OF ALLOWABLE SKIN FRICTION PAST 3m OF kPa

**2 TYP. TIMBER PILE**

**3 TIMBER PILE UPLIFT (U1)**



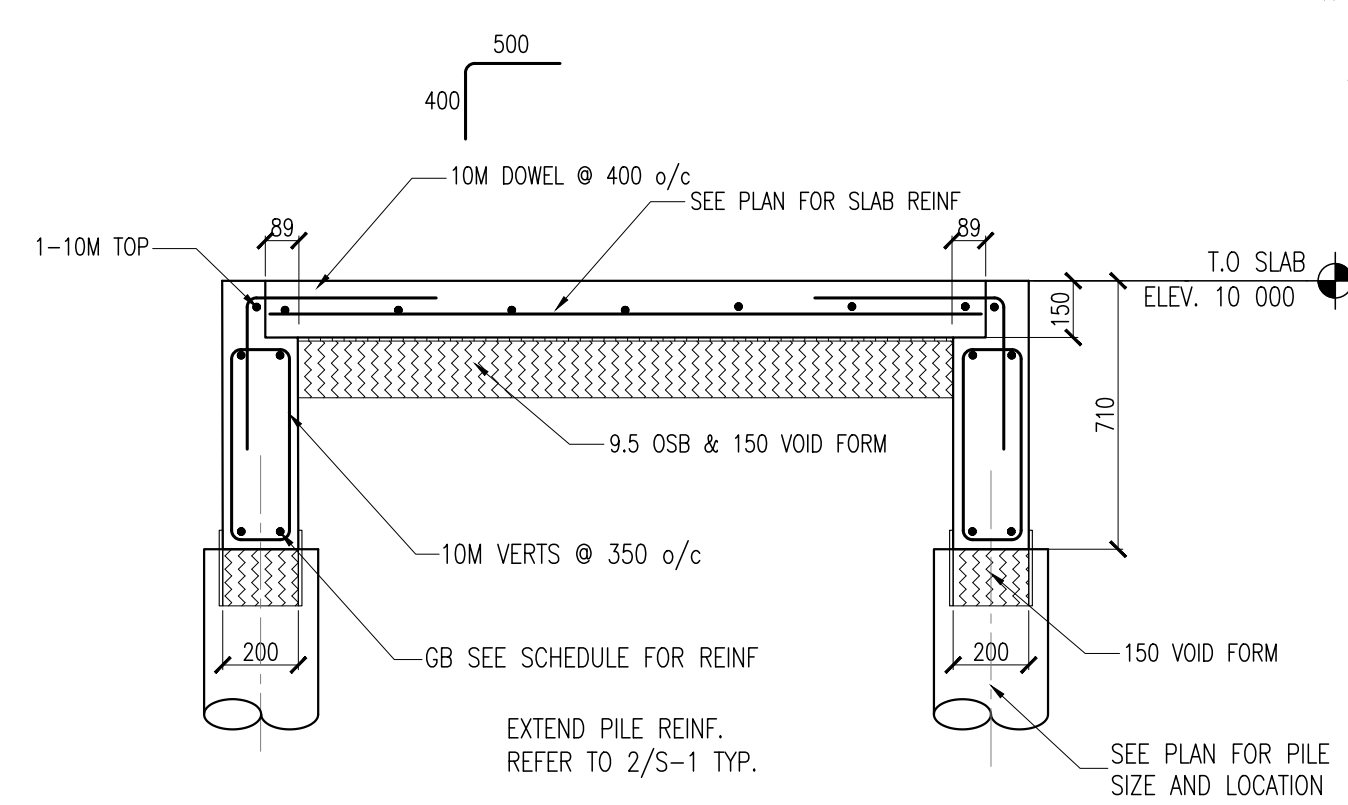
**4 ENTRY PORTAL FOUNDATION PLAN**  
1:20



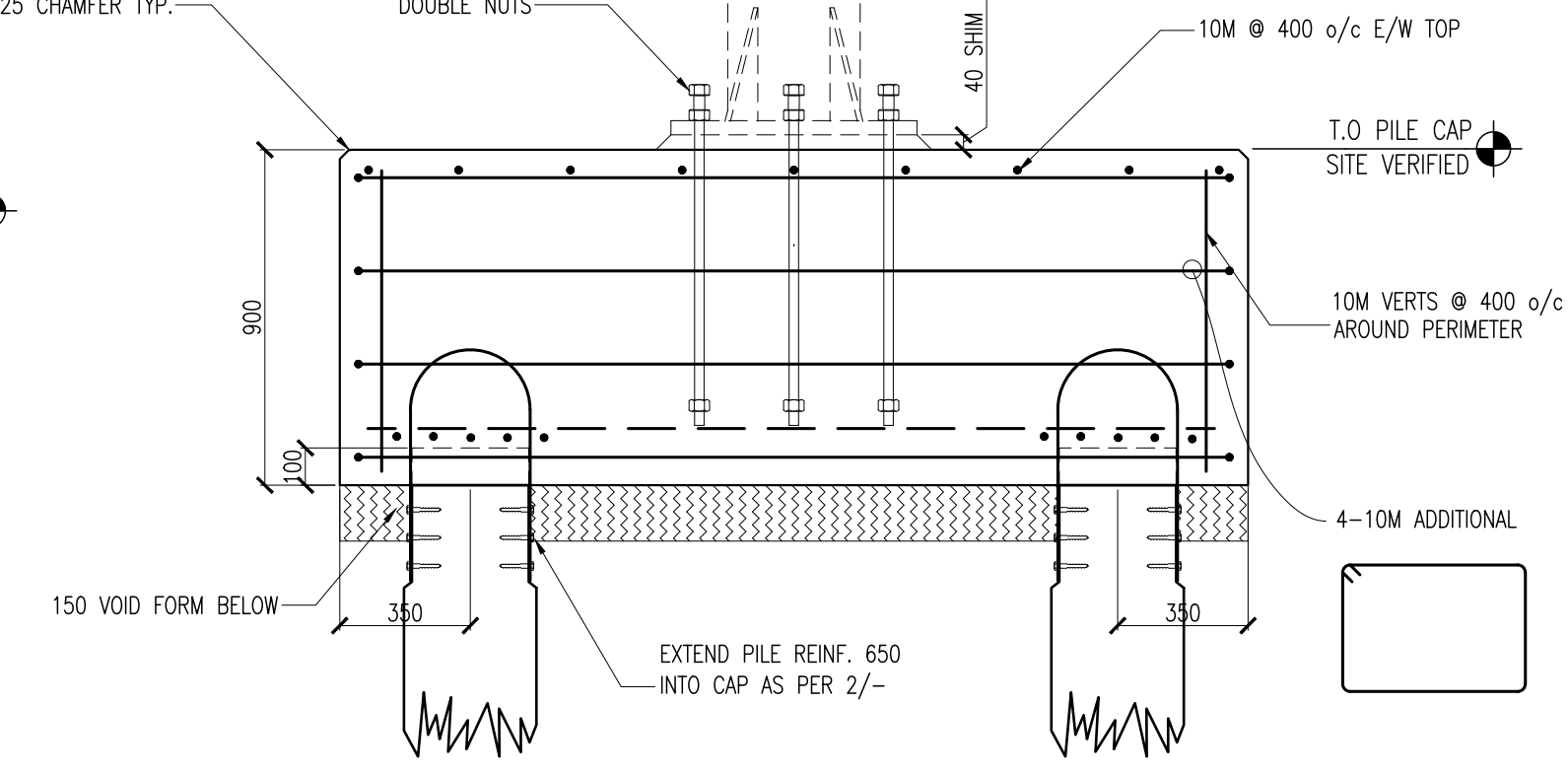
**4A ENTRY PORTAL FOUNDATION SECTION**  
1:20

**SIGNAGE NOTES:**

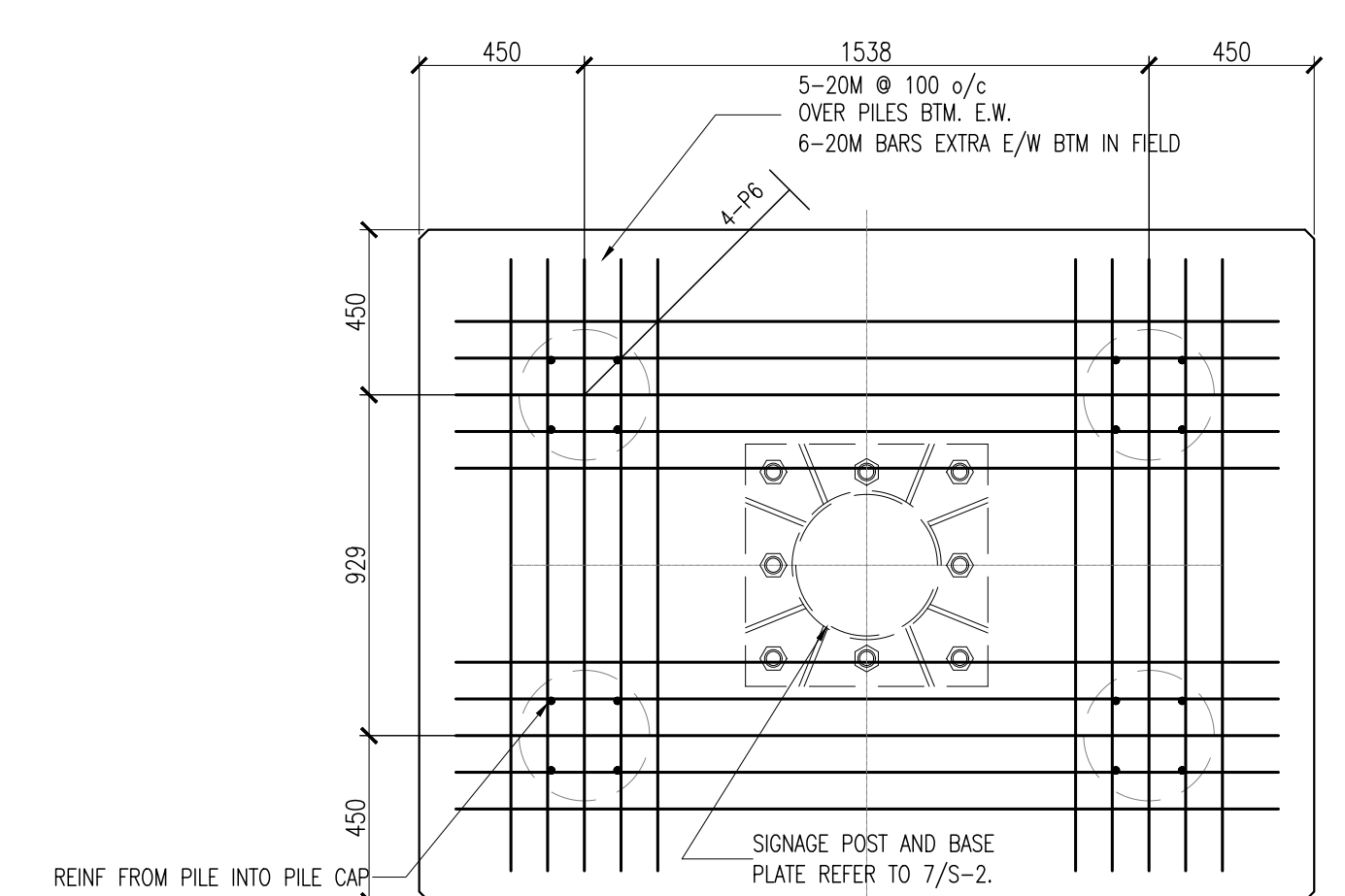
- VERIFY LOCATION AND TOP OF PILE CAP ELEVATION OF SIGN WITH ARCH. DRAWINGS



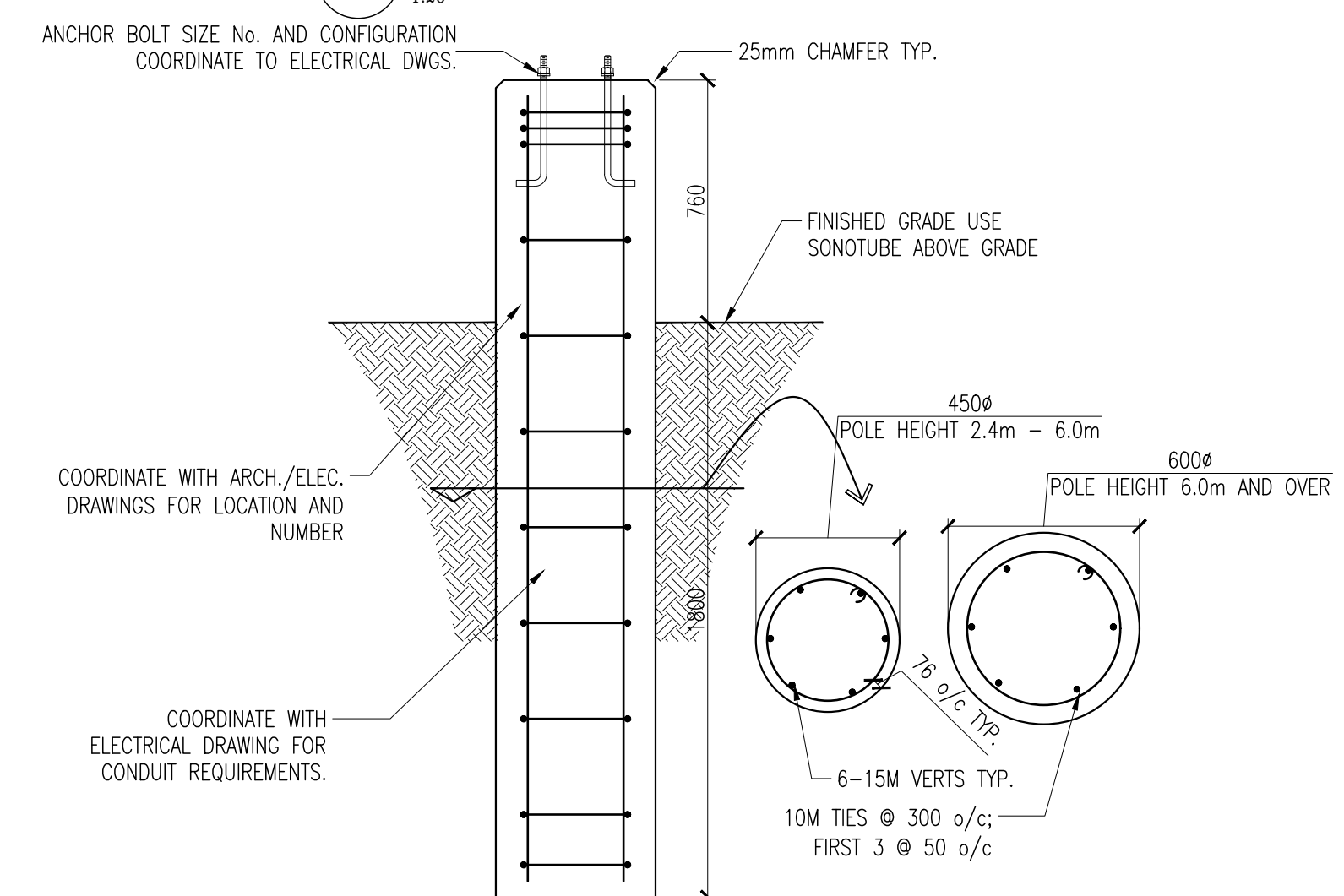
**5 ENTRY SLAB REINF.**  
1:20



**6 PILE CAP SECTION (PC-1)**  
1:20



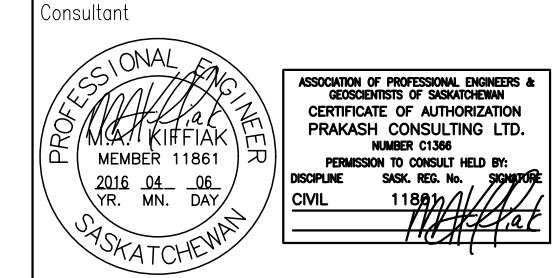
**7 PILE CAP REINF. (PC-1)**  
1:20



**8 EXTERIOR LIGHTING POST DETAIL**  
1:20

| No.       | Description | Date |
|-----------|-------------|------|
| REVISIONS |             |      |
|           |             |      |

- THIS DRAWING IS THE PROPERTY OF A&W FOOD SERVICES OF CANADA INC. & MAY NOT BE USED IN WHOLE OR IN PART FOR ANY PROJECT OTHER THAN THAT DESIGNATED HEREON
- DO NOT SCALE DRAWINGS - WRITTEN DIMENSIONS TAKE PRECEDENCE
- CONTRACTOR TO VERIFY JOB SITE DIMENSIONS & CONDITIONS, REPORT ANY & ALL DISCREPANCIES TO THE OWNER & A&W IMMEDIATELY BEFORE PROCEEDING WITH WORK
- ALL WORK TO CONFORM TO THE LATEST LOCAL BUILDING CODES, BY-LAWS, & NFPA REQUIREMENTS, IN ADDITION TO OTHER REGULATIONS HAVING JURISDICTION



**PRAKASH**  
PRAKASH CONSULTING LTD  
STRUCTURAL ENGINEERS  
#4-210 15TH STREET EAST  
PRINCE ALBERT, SK S6V 1G2  
T 306 922 2101 F 306 763 0212

**RNF VENTURES LTD.**

811 CENTRAL AVENUE  
PRINCE ALBERT, SK  
S6V 4V2



**A&W FOOD SERVICES OF CANADA INC.**  
Project  
**A&W RESTAURANT**  
"2015 GFMGF CONCEPT DESIGN"  
11401 RAILWAY AVE,  
NORTH BATTLEFORD, SK

Title **FOUNDATION PLAN**

|                         |                              |  |
|-------------------------|------------------------------|--|
| File Name               | Date Created<br>JAN 28, 2016 | Prototype Version<br>2178L (2015 V1.1) |
| Project Number<br>14064 | Consultant<br>2016-01        | Page Number<br>S-1                     |
| Drawn By<br>GG          | Scale<br>AS NOTED            |  |