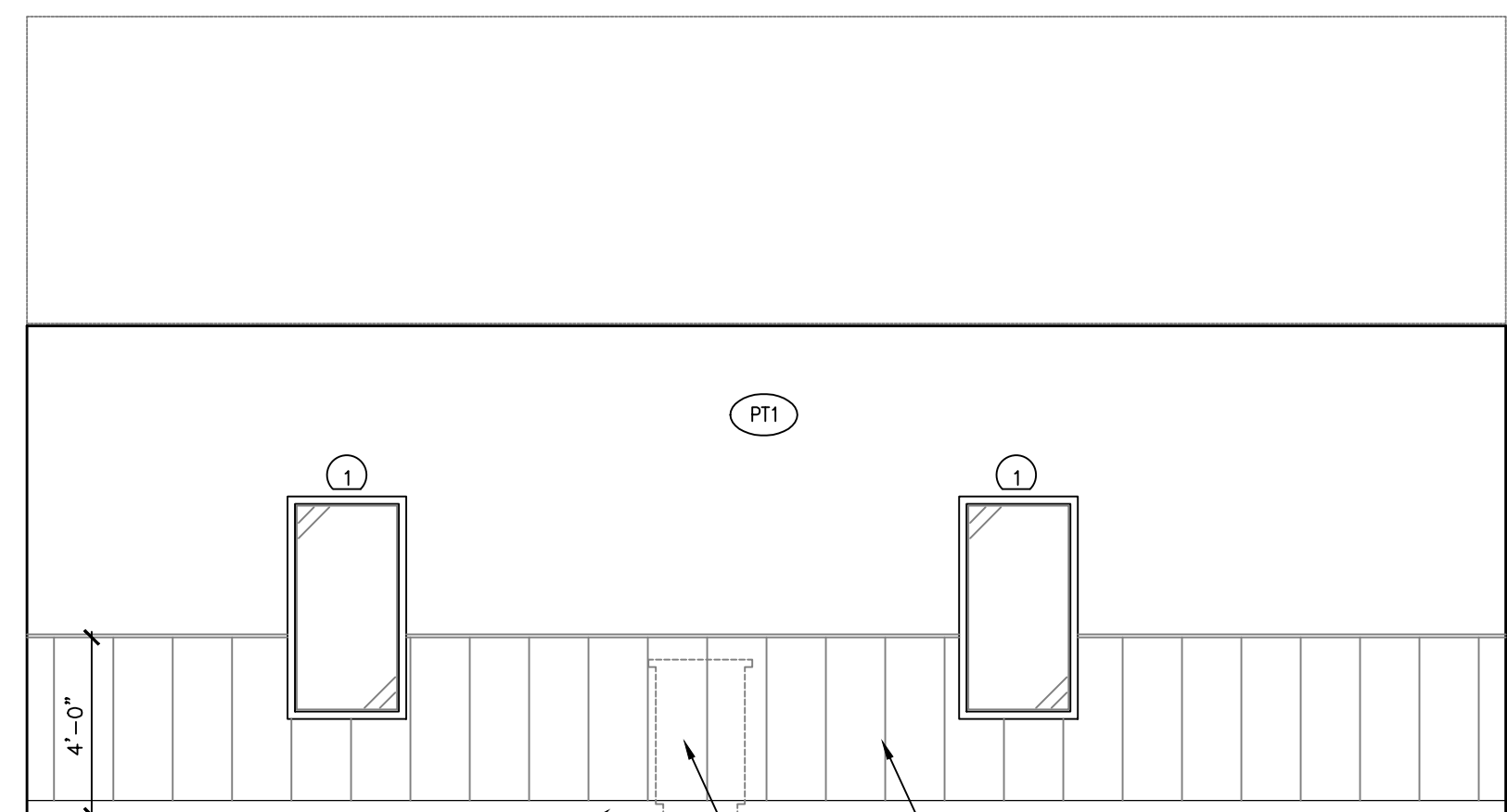
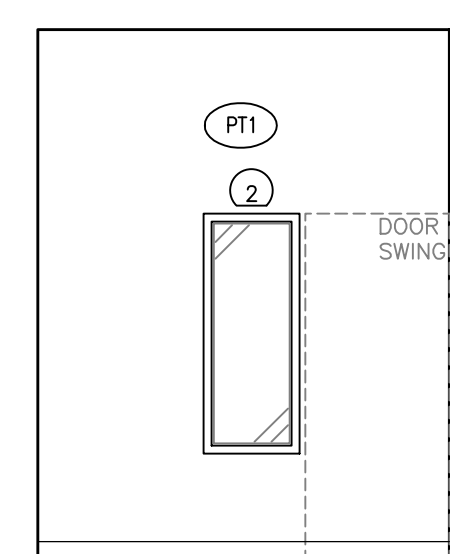


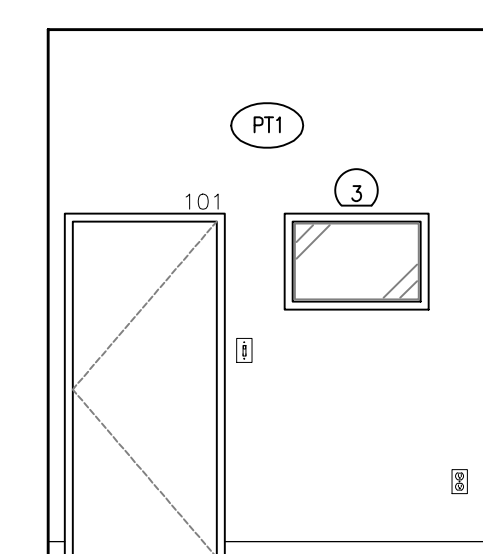
1 CUSTOMER AREA 100 - NORTH  
A700 1/4"=1'-0"



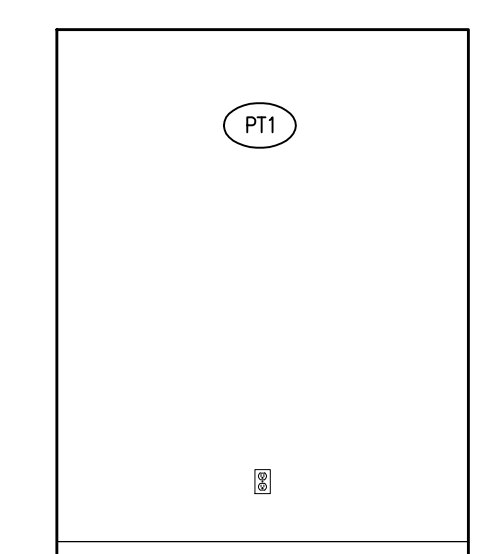
2 CUSTOMER AREA 100 - EAST  
A700 1/4"=1'-0"



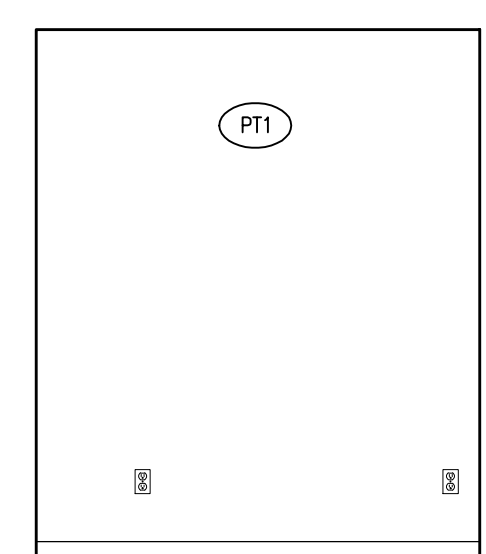
5 OFFICE 101 - NORTH  
A700 1/4"=1'-0"



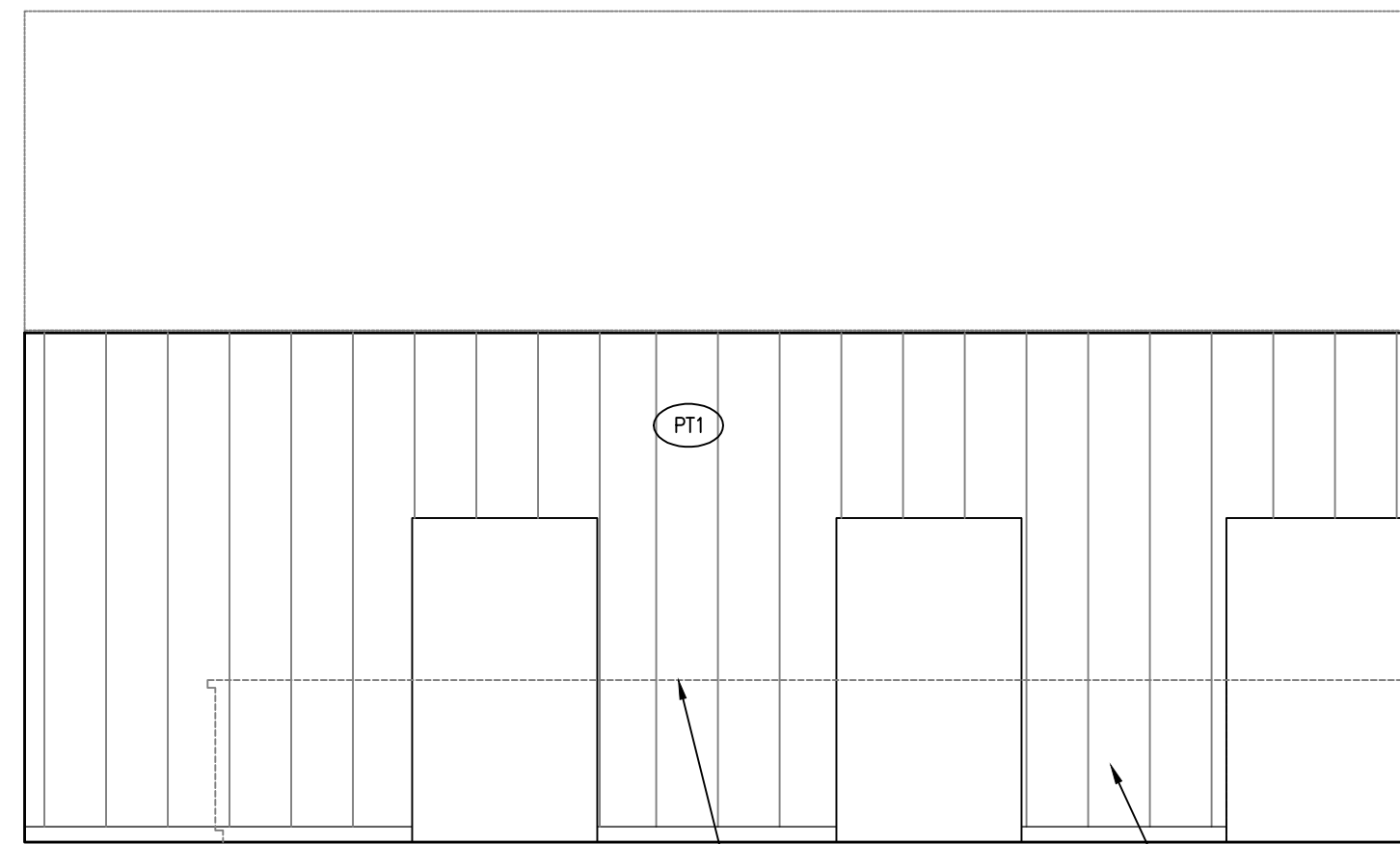
6 OFFICE 101 - EAST  
A700 1/4"=1'-0"



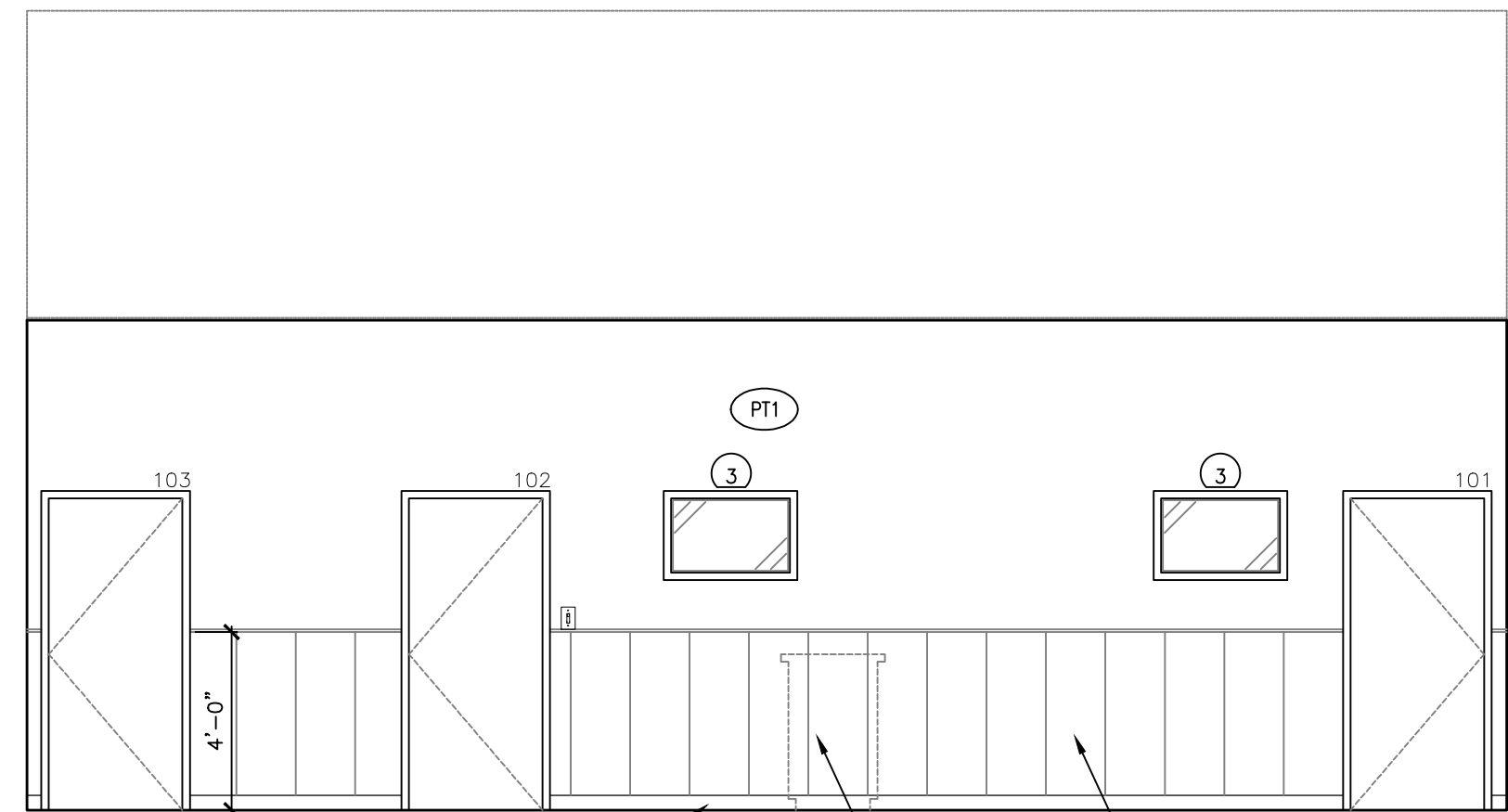
7 OFFICE 101 - SOUTH  
A700 1/4"=1'-0"



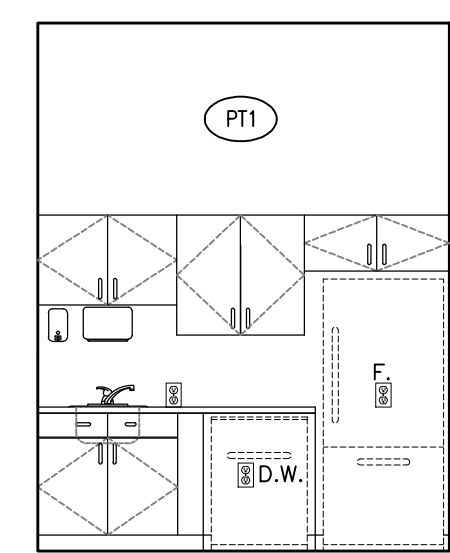
8 OFFICE 101 - WEST  
A700 1/4"=1'-0"



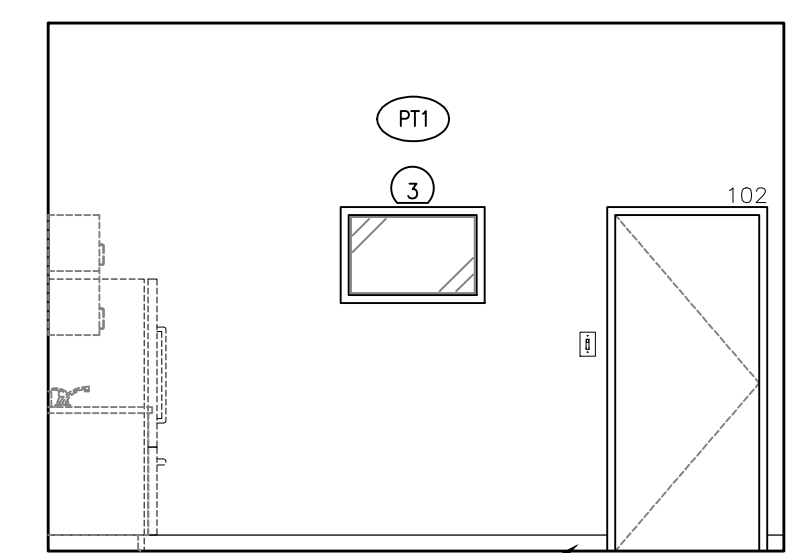
3 CUSTOMER AREA 100 - SOUTH  
A700 1/4"=1'-0"



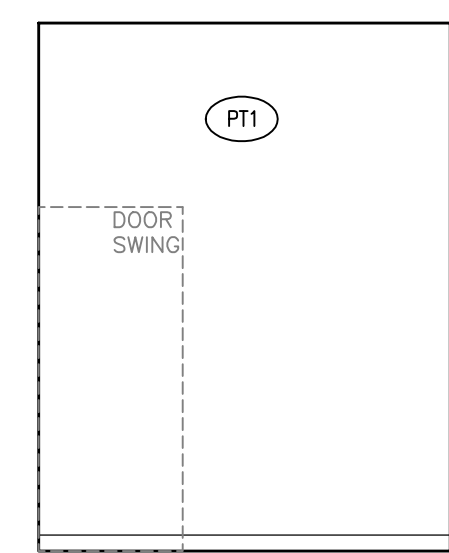
4 CUSTOMER AREA 100 - WEST  
A700 1/4"=1'-0"



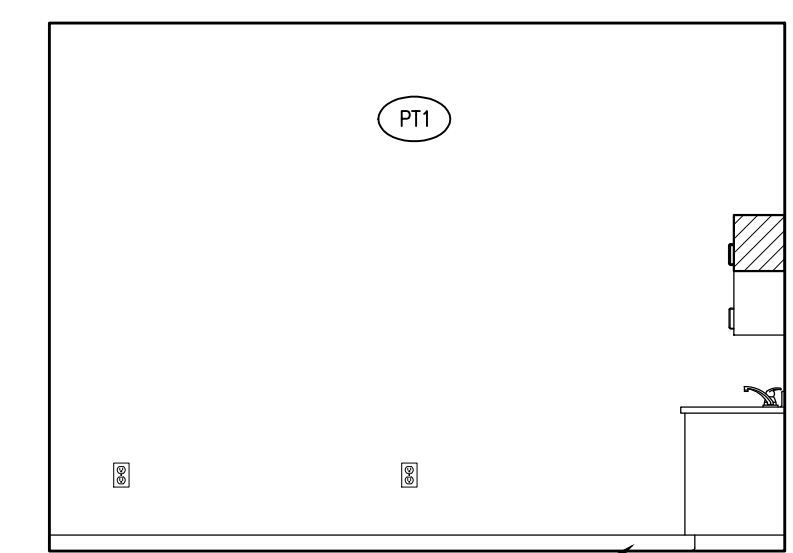
9 STAFF ROOM 102 - NORTH  
A700 1/4"=1'-0"



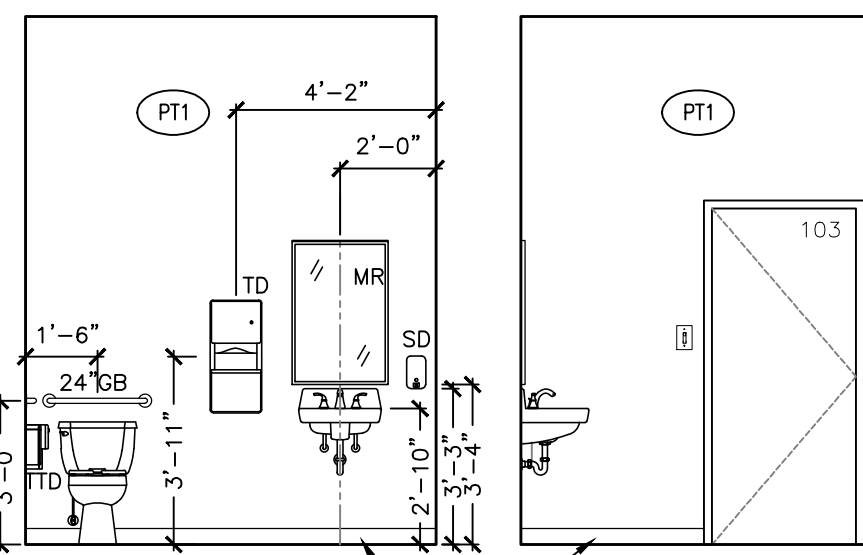
10 STAFF ROOM 102 - EAST  
A700 1/4"=1'-0"



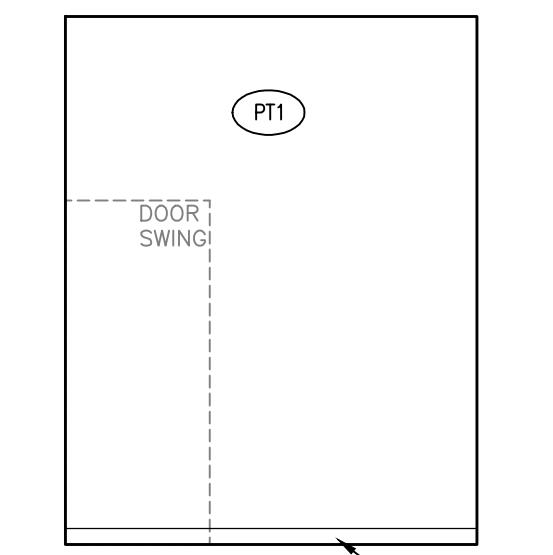
11 STAFF ROOM 102 - SOUTH  
A700 1/4"=1'-0"



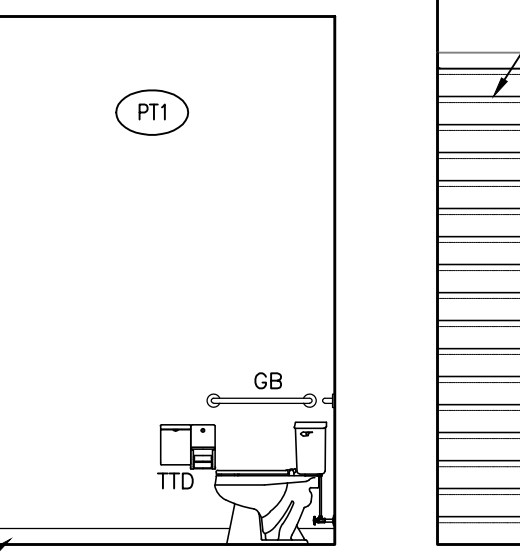
12 STAFF ROOM 102 - WEST  
A700 1/4"=1'-0"



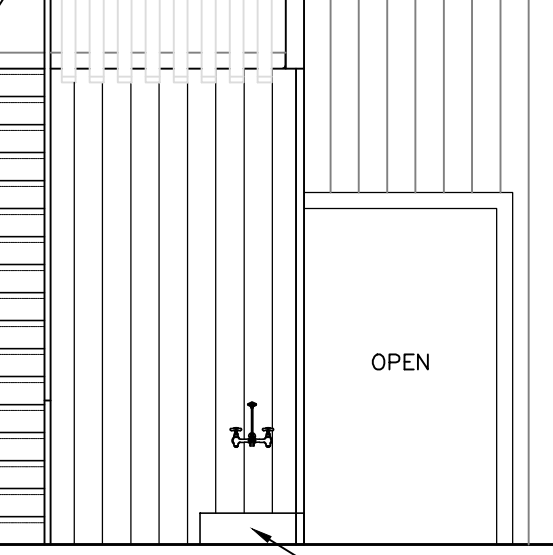
13 W.C. 103 - NORTH  
A700 1/4"=1'-0"



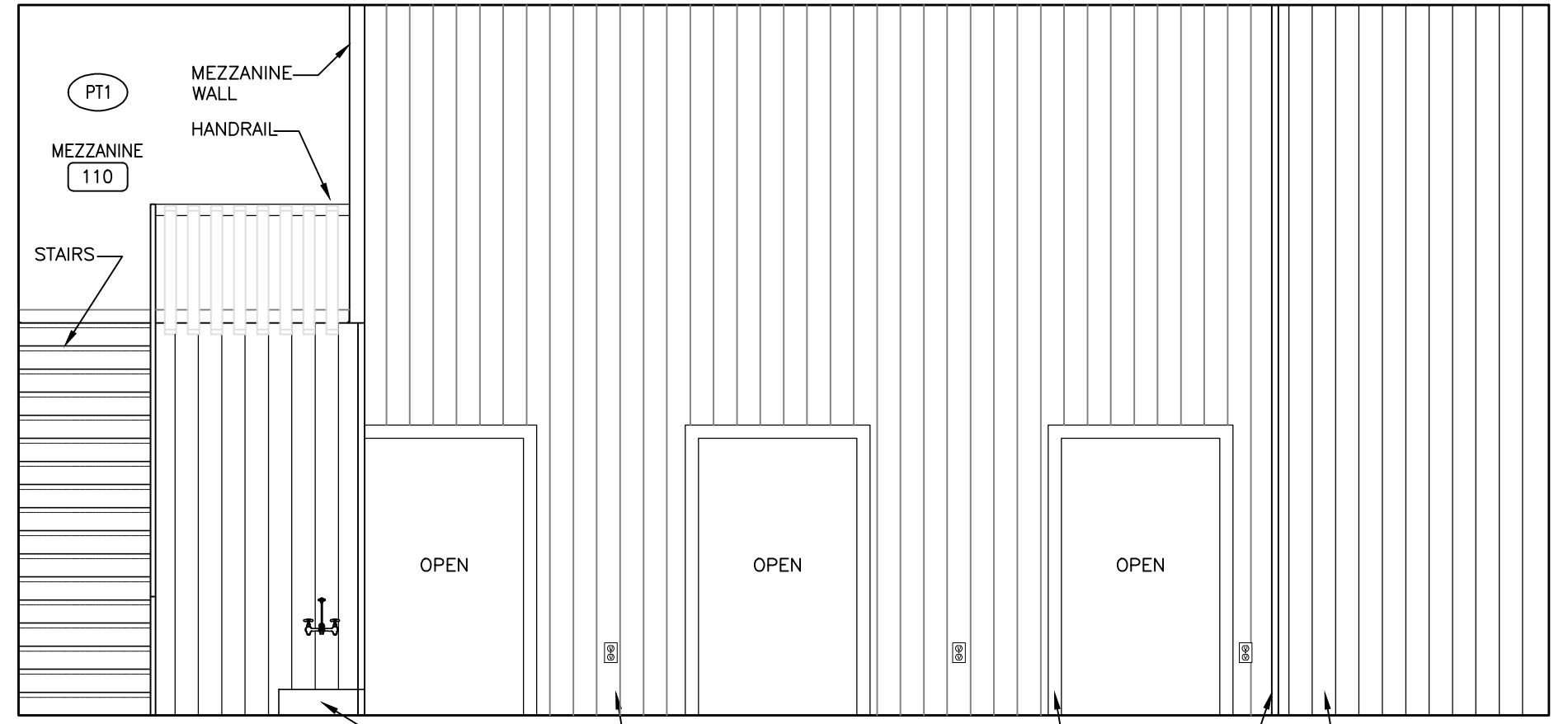
14 W.C. 103 - EAST  
A700 1/4"=1'-0"



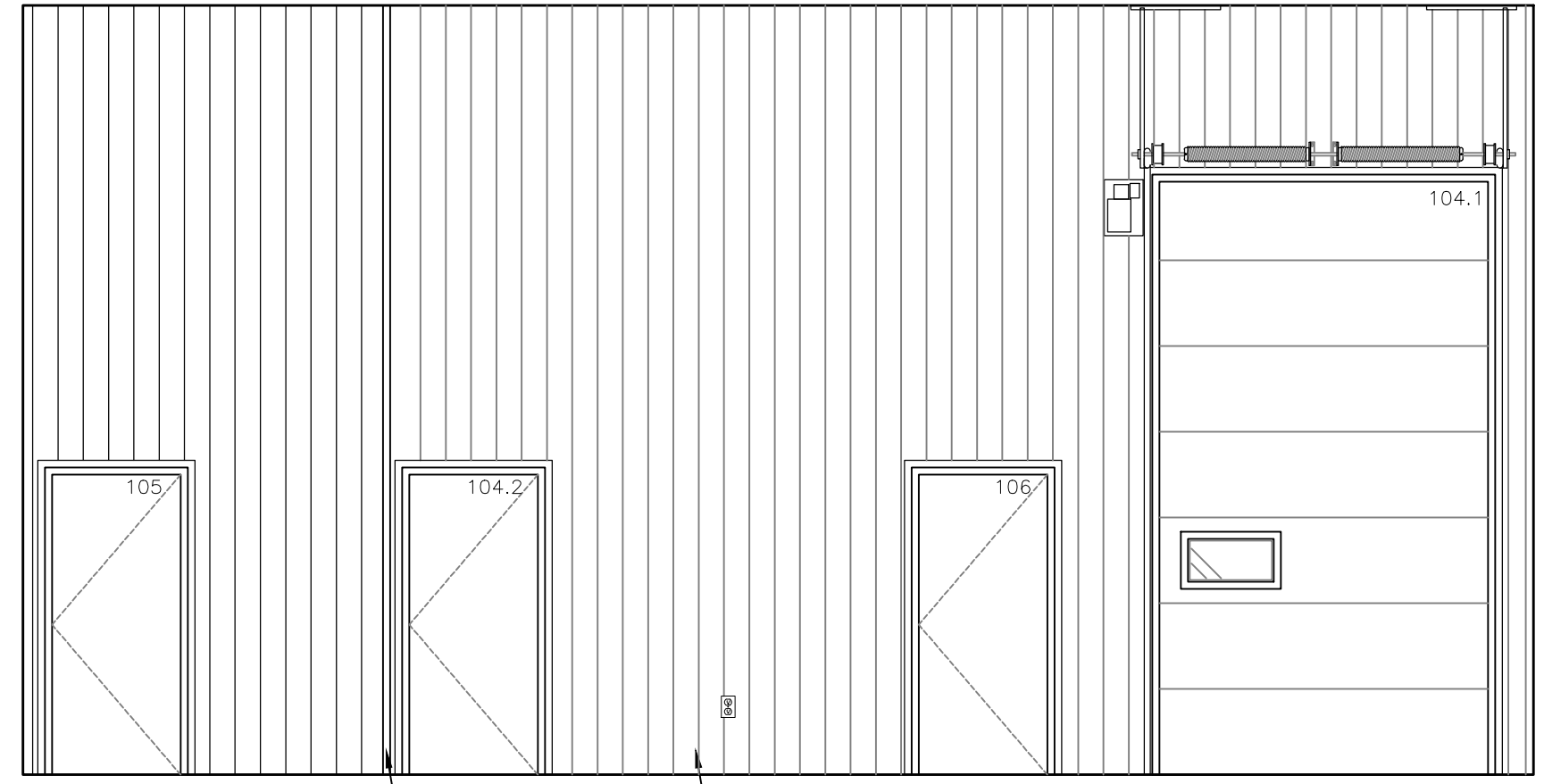
15 W.C. 103 - SOUTH  
A700 1/4"=1'-0"



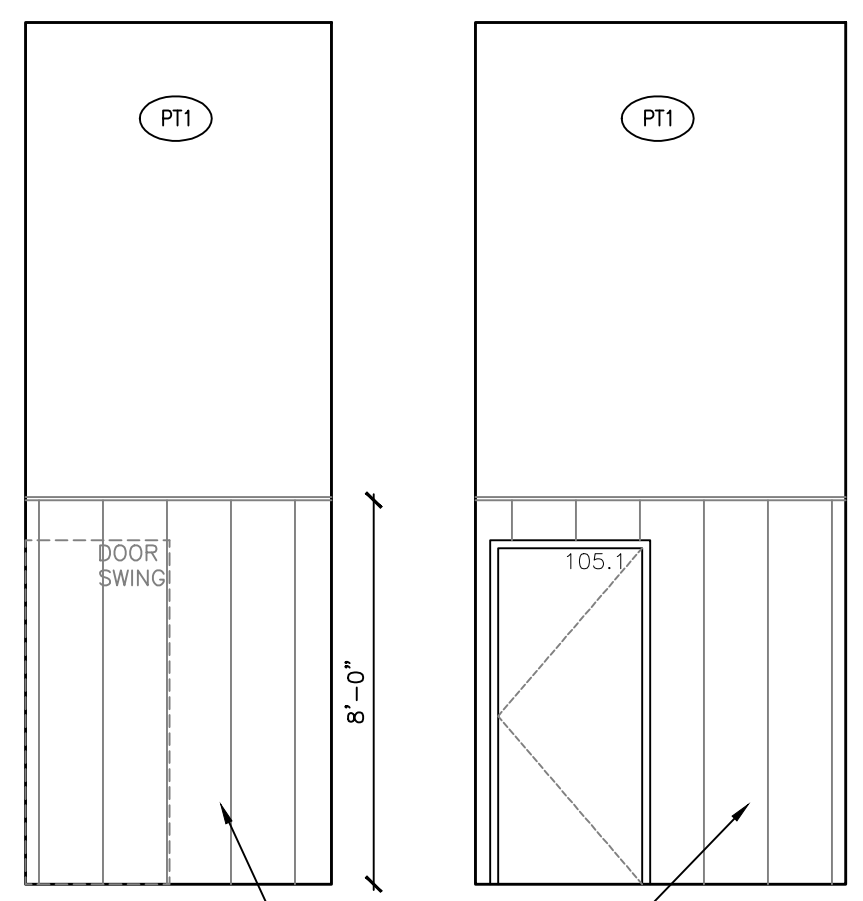
16 W.C. 103 - WEST  
A700 1/4"=1'-0"



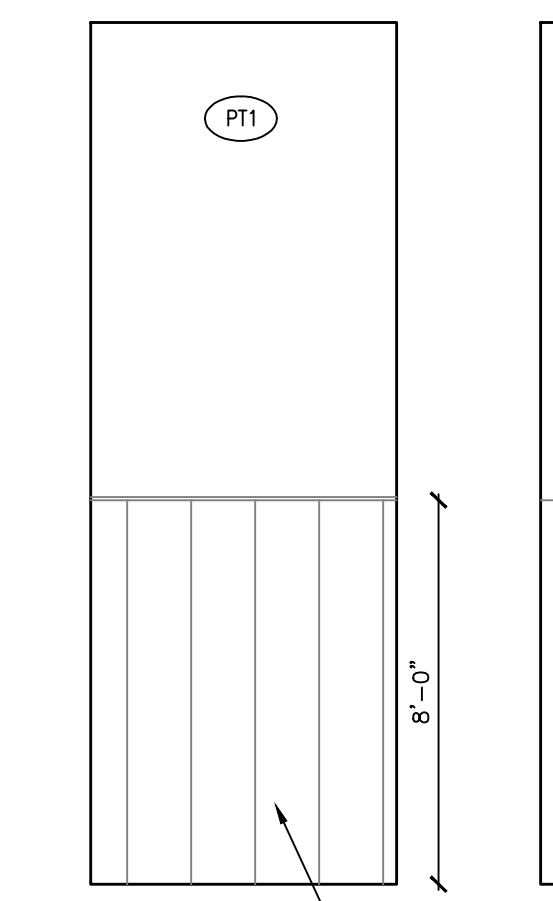
21 REAR AREA 104 - NORTH  
A700 1/4"=1'-0"



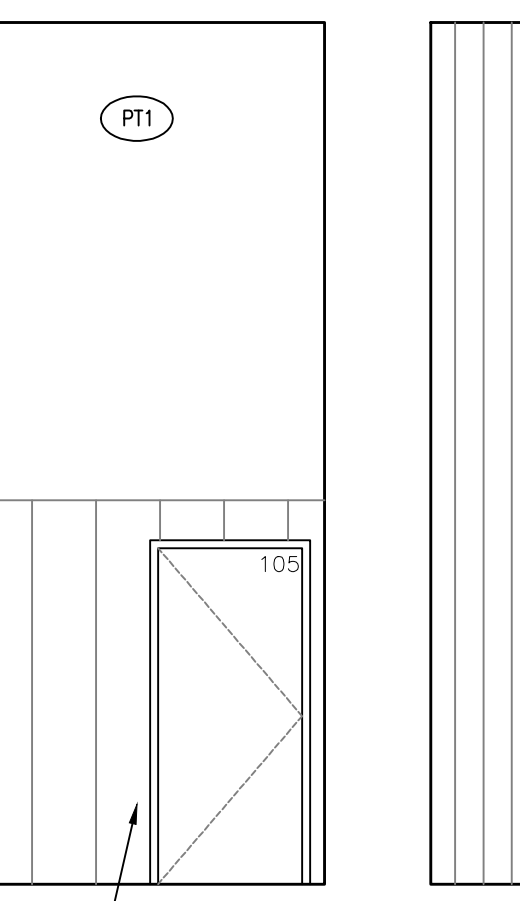
22 REAR AREA 104 - EAST  
A700 1/4"=1'-0"



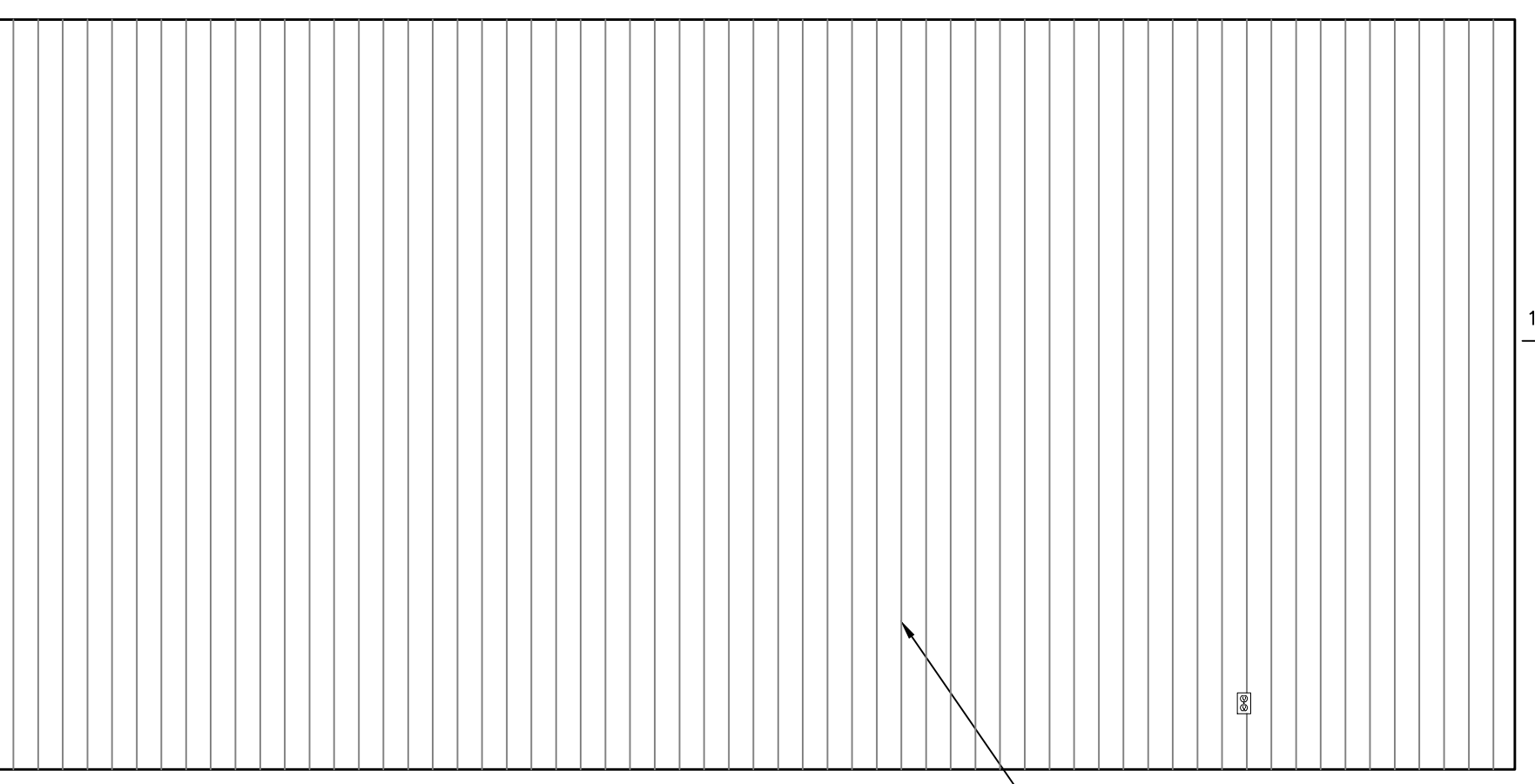
17 DROP & GO 105 - NORTH  
A700 1/4"=1'-0"



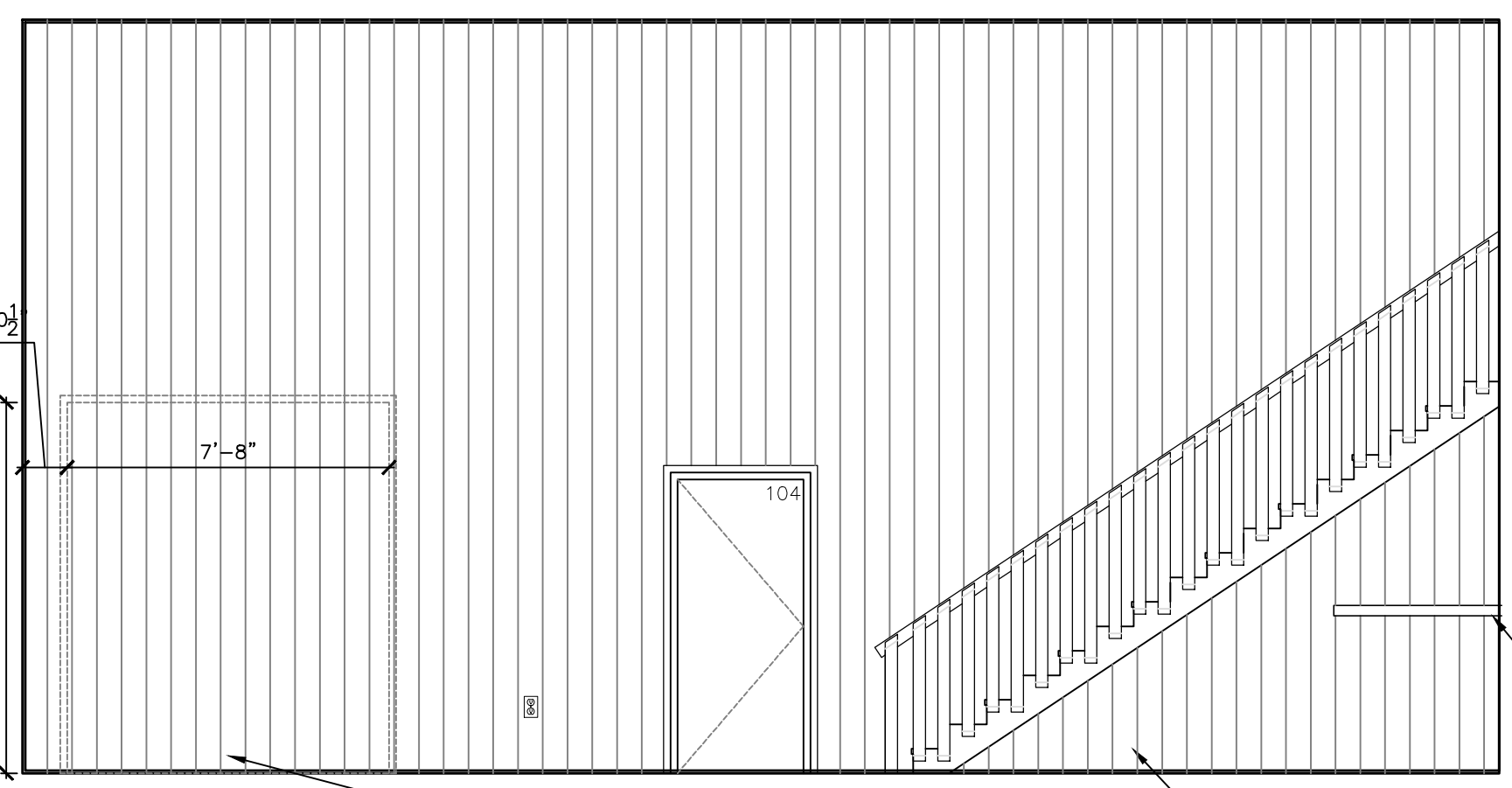
18 DROP & GO 105 - EAST  
A700 1/4"=1'-0"



19 DROP & GO 105 - SOUTH  
A700 1/4"=1'-0"



23 REAR AREA 104 - SOUTH  
A700 1/4"=1'-0"



24 REAR AREA 104 - WEST  
A700 1/4"=1'-0"

ISSUED FOR TENDER JAN 23, 2017

SEALS:

CLIENT:  
**TOWN OF WYNYARD**

CONSULTANTS:

**R B M**  
architecture  
2235 Speers Avenue email: office@rbmarchitecture.com \*704.1101-101 Street  
Sakatoon, SK fax: 306.242.9130 North Battleford, SK  
ph: 306.242.2336 ph: 306.441.4298

PROJECT:  
**WYNYARD  
RECYCLING DEPOT**

DRAWING:  
**INTERIOR ELEVATIONS**

PROJECT No: 751-16 SHEET No: PLOT No: 1  
DATE: JAN 23, 2017  
DRAWN BY: N.D.  
SCALE: AS INDICATED  
**A700**