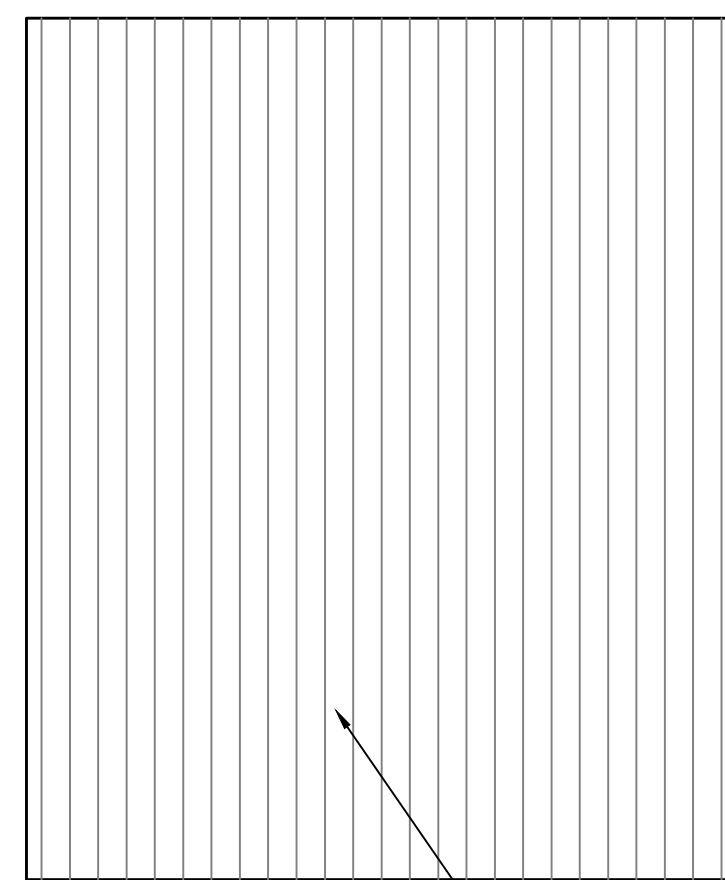
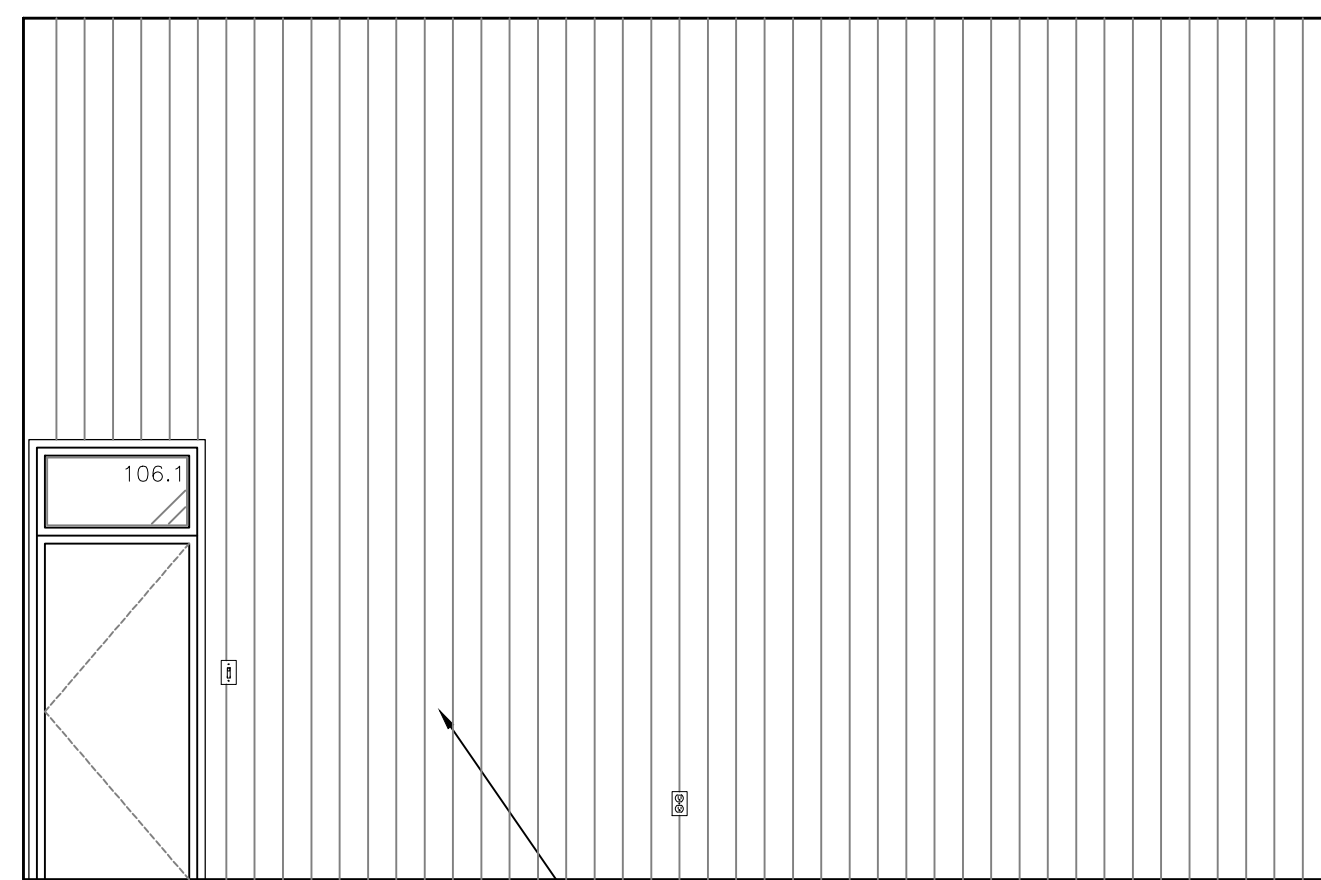


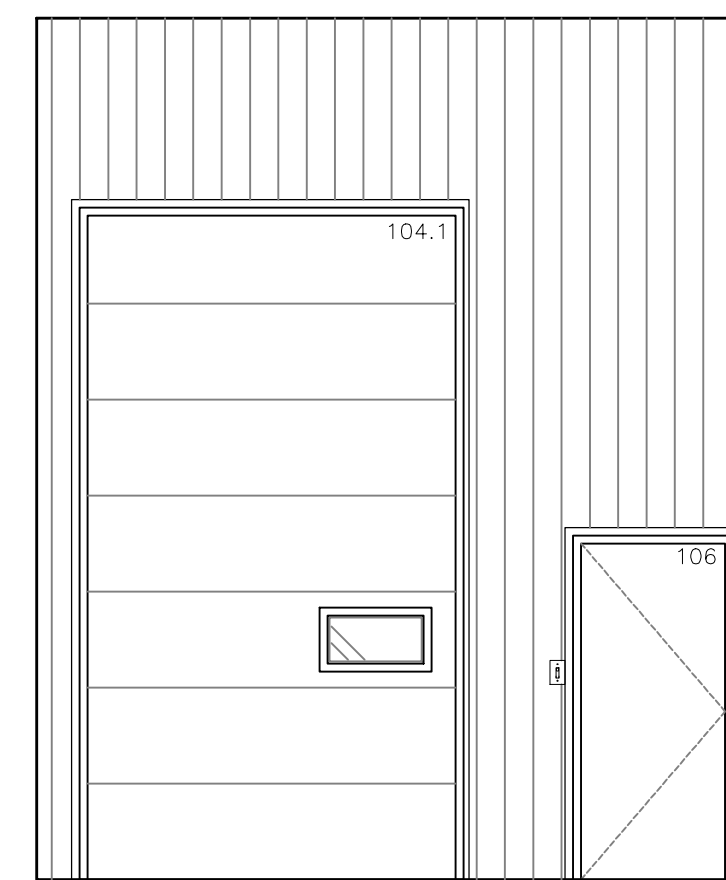
1. LOADING AREA 106 - NORTH
A701 1/4"=1'-0"



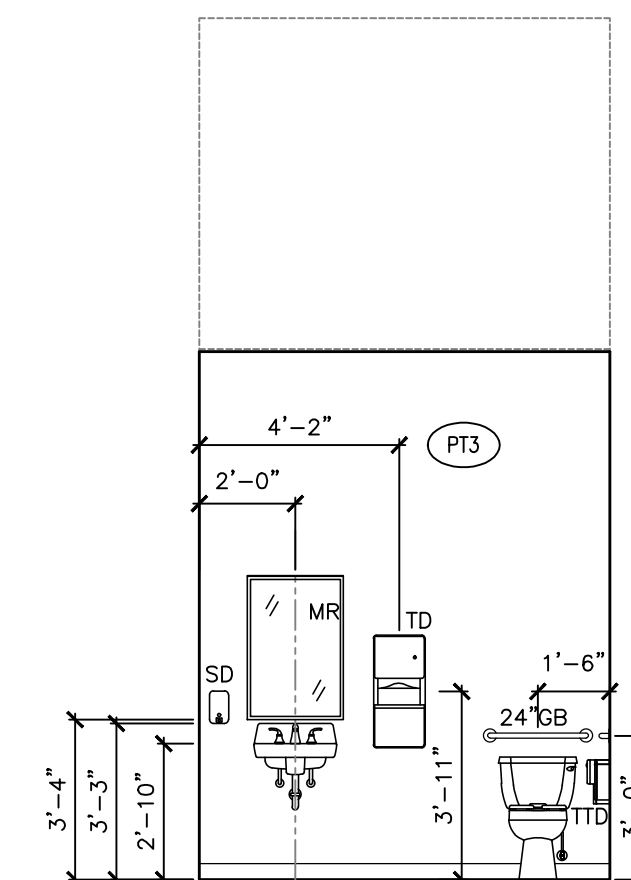
2. LOADING AREA 106 - EAST
A701 1/4"=1'-0"



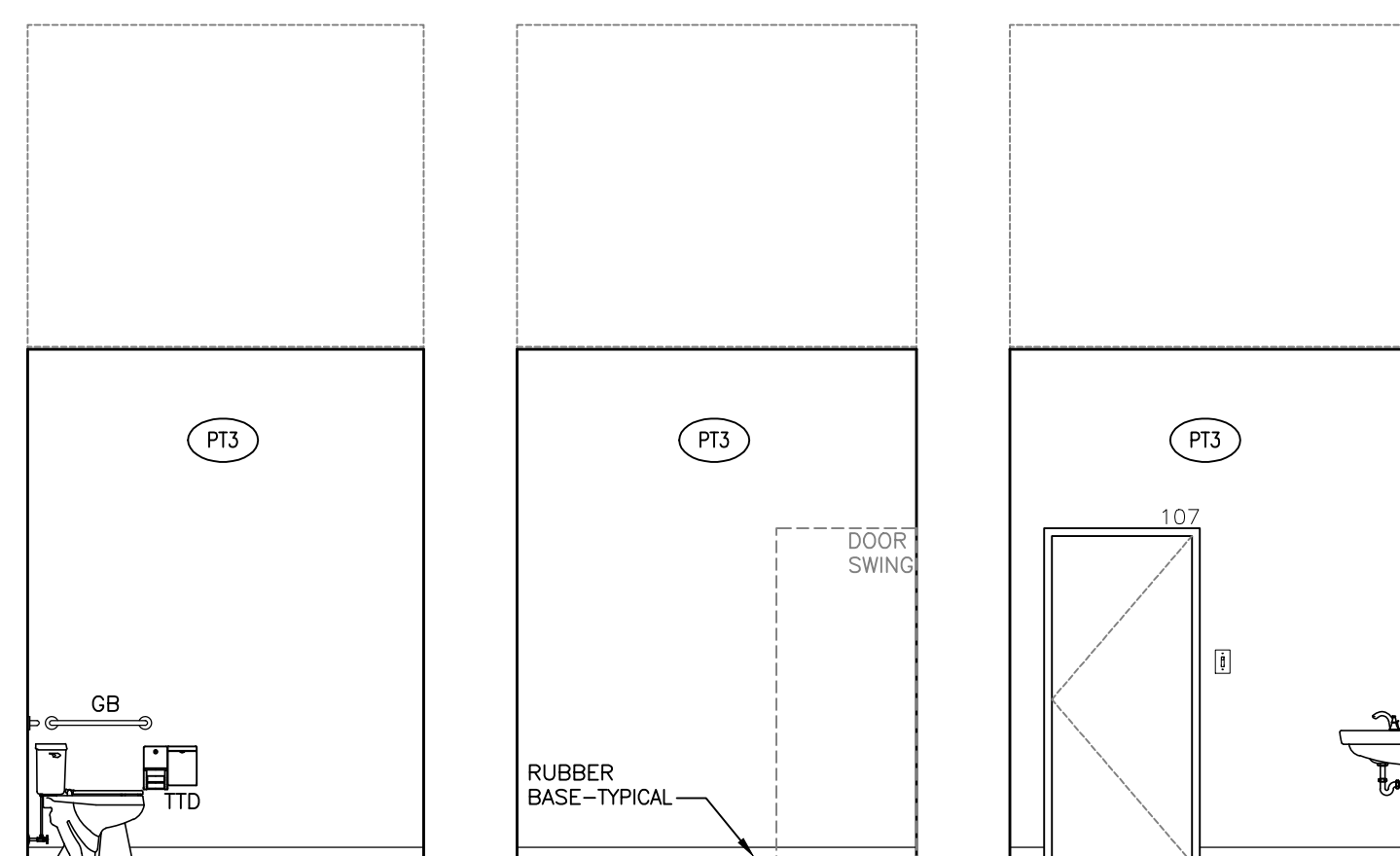
3. LOADING AREA 106 - SOUTH
A701 1/4"=1'-0"



4. LOADING AREA 106 - WEST
A701 1/4"=1'-0"



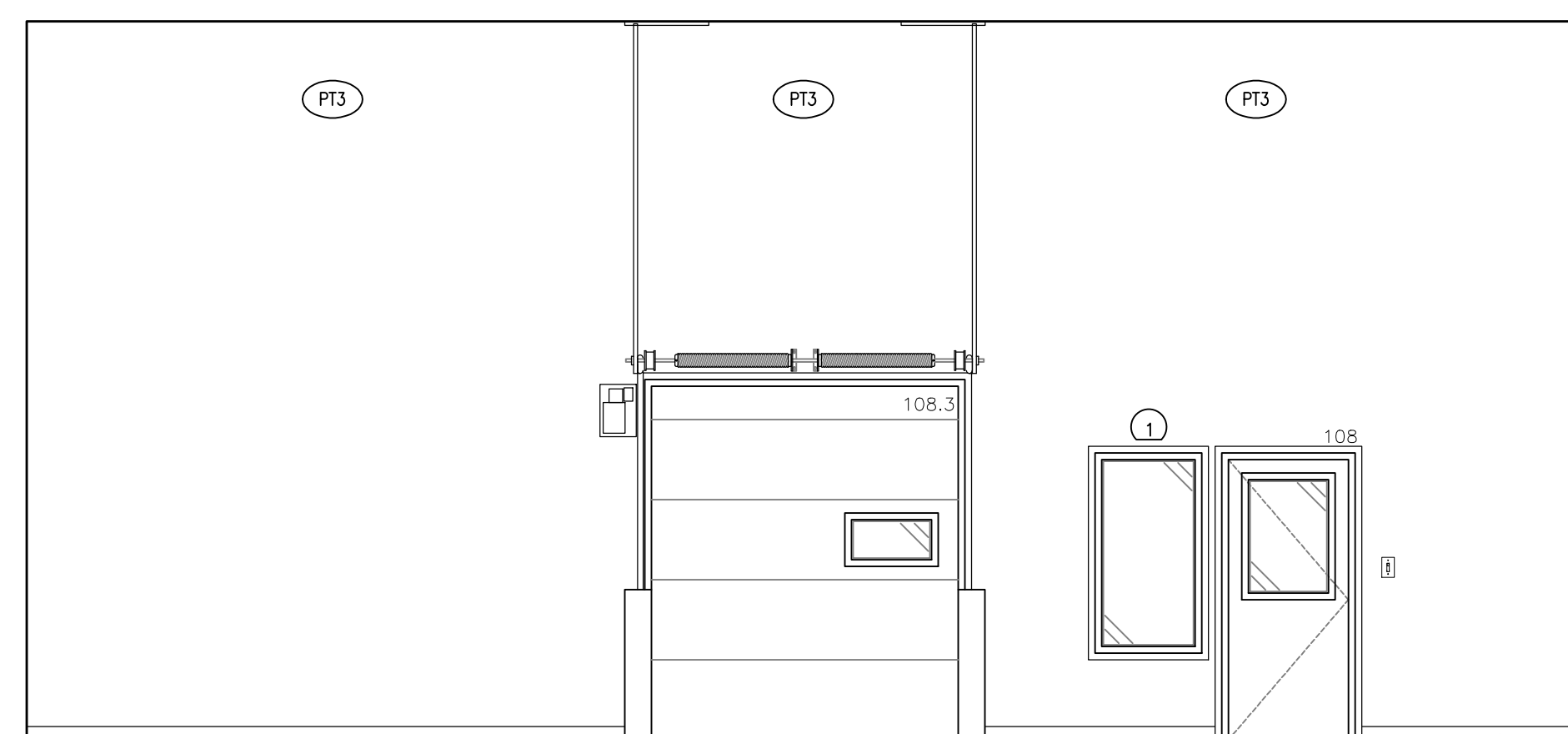
5. W.C. 107 - NORTH
A701 1/4"=1'-0"



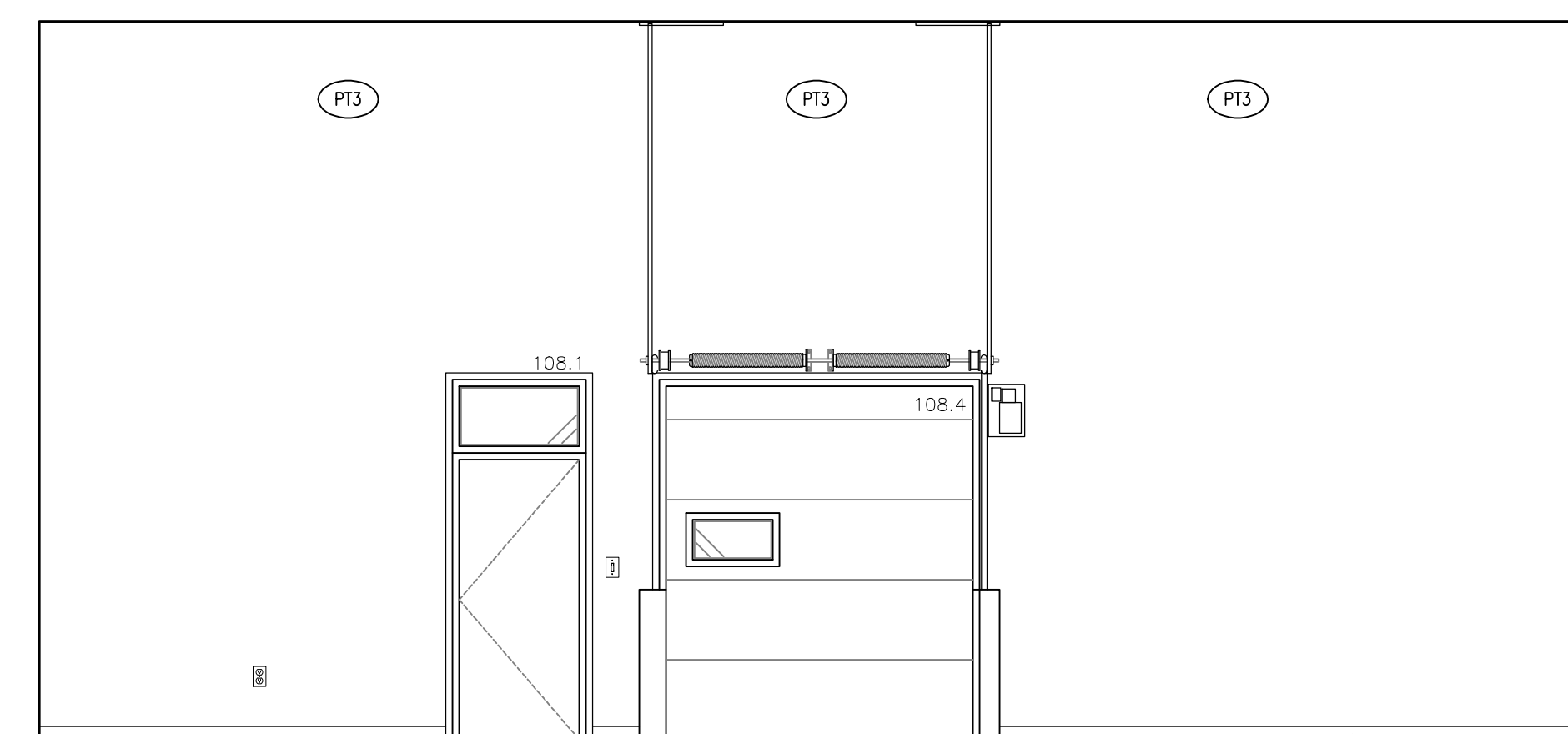
6. W.C. 107 - EAST
A701 1/4"=1'-0"

7. W.C. 107 - SOUTH
A701 1/4"=1'-0"

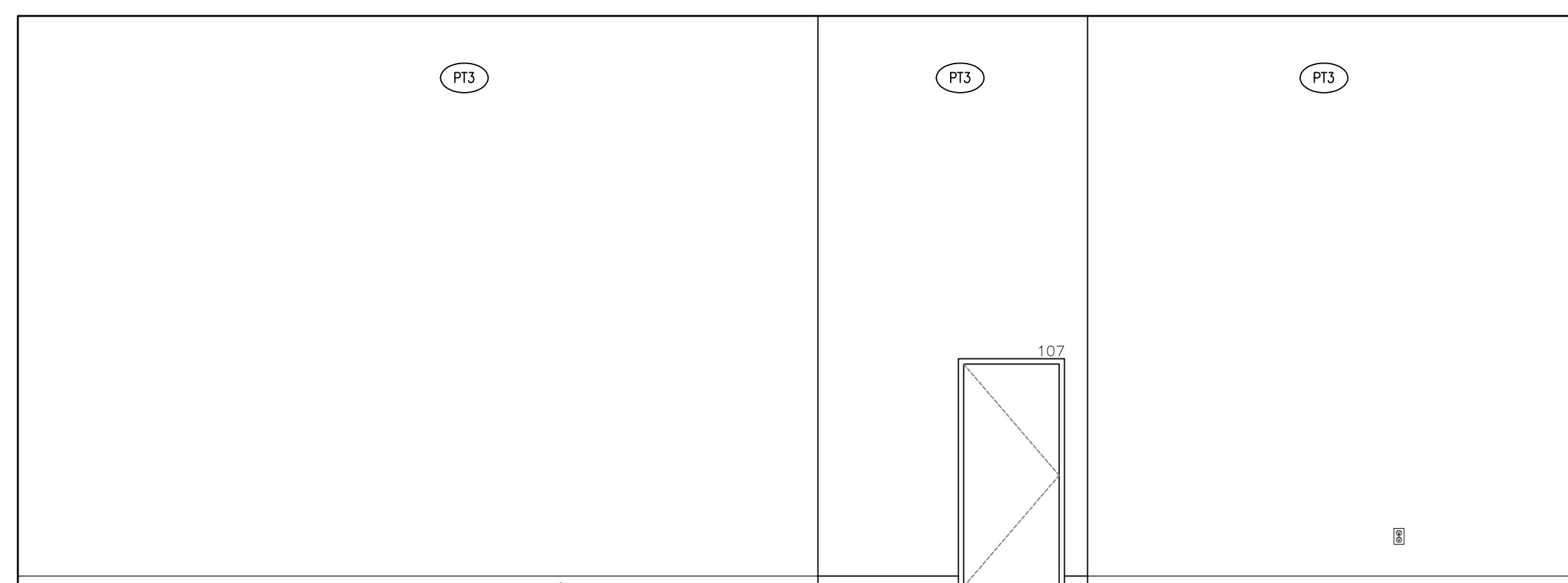
8. W.C. 107 - WEST
A701 1/4"=1'-0"



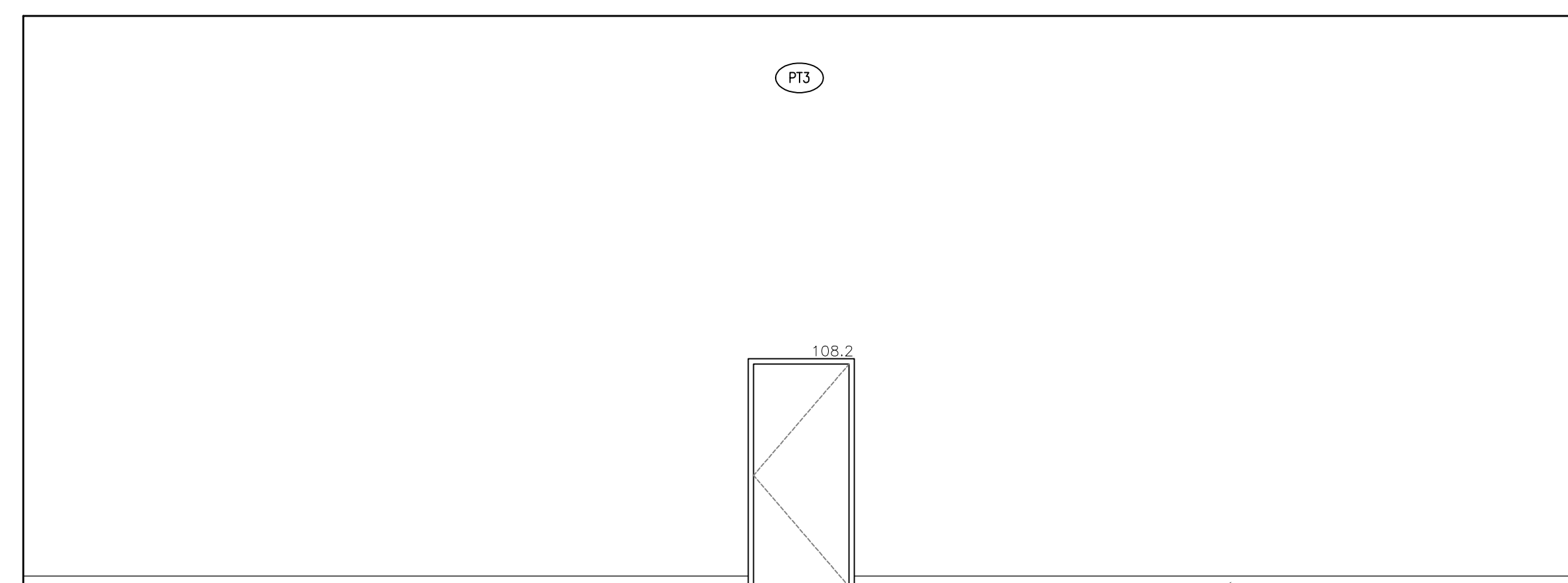
9. RECYCLING CENTRE 108 - NORTH
A701 1/4"=1'-0"



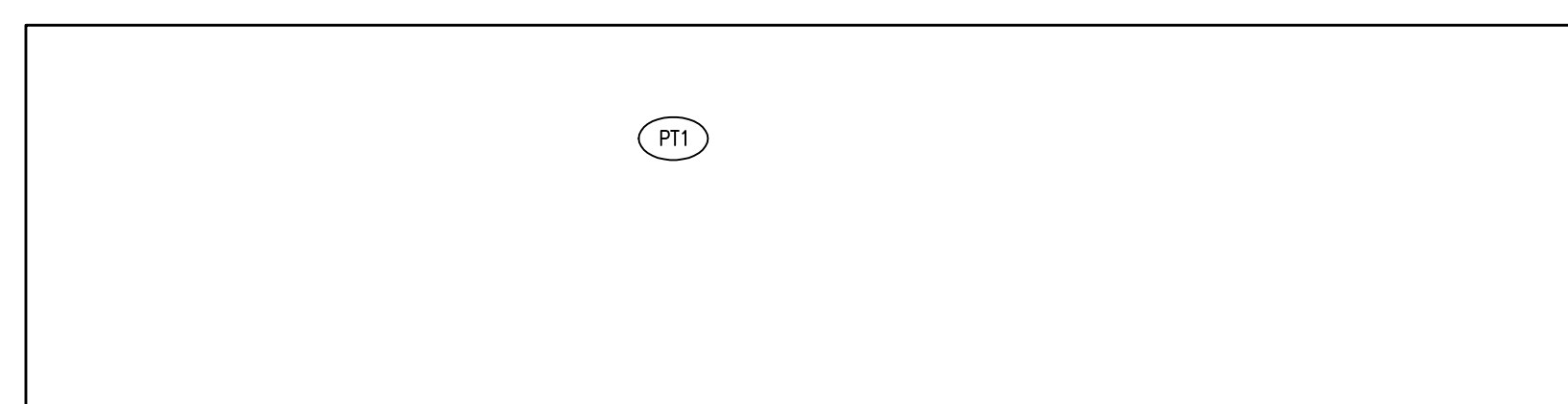
10. RECYCLING CENTRE 108 - SOUTH
A701 1/4"=1'-0"



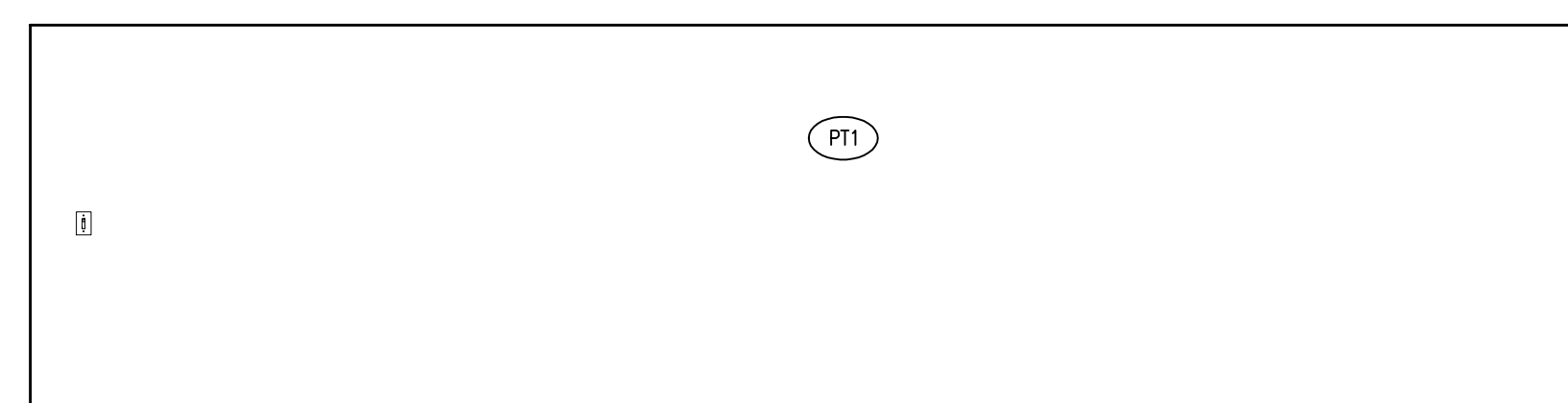
11. RECYCLING CENTRE 108 - EAST
A701 1/4"=1'-0"



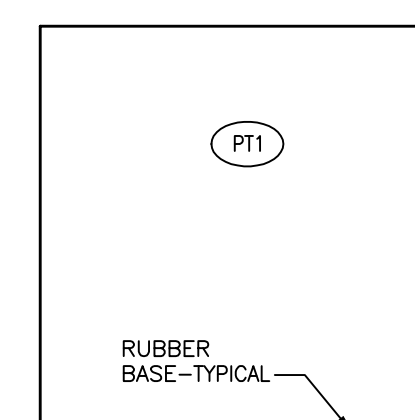
12. RECYCLING CENTRE 108 - WEST
A701 1/4"=1'-0"



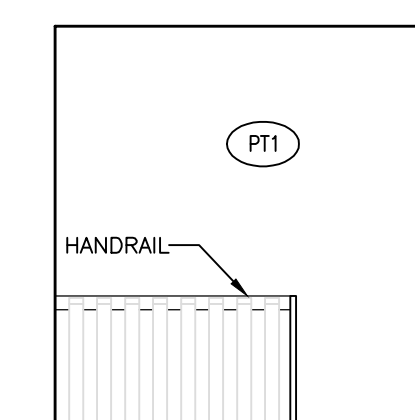
13. MEZZANINE 110 - EAST
A701 1/4"=1'-0"



14. MEZZANINE 110 - WEST
A701 1/4"=1'-0"



15. MEZZANINE 110 - NORTH
A701 1/4"=1'-0"



16. MEZZANINE 110 - SOUTH
A701 1/4"=1'-0"

ISSUED FOR TENDER JAN 23, 2017

SEALS:

CLIENT:
TOWN OF WYNYARD

CONSULTANTS:

R B M
architecture
2295 Speers Avenue email: office@rbmarchitecture.com *704.1101-101 Street
Sakatoon, SK fax: 306.242.9130 North Battleford, SK
ph: 306.242.2336 ph: 306.441.4295

PROJECT:
WYNYARD
RECYCLING DEPOT

DRAWING:
INTERIOR ELEVATIONS

PROJECT No: 751-16 SHEET No: PLOT No: 1
DATE: JAN 23, 2017
DRAWN BY: N.D. **A701**
SCALE: AS INDICATED