

1. GENERAL

- 1.1 This addendum shall be incorporated into and shall form an integral part of the contract documents.
- 1.2 The tender submitted shall include all costs to the contract, including any changes as a result of this addendum.
- 1.3 Advise all parties, trades and sub-trades of items affecting the work and coordinate accordingly.
- 1.4 Acknowledge receipt of this addendum on the tender form

2. ARCHITECTURAL

- 2.1 Please refer to Specification Section 09310, Item 3.1.7 and delete reference to “*Make external angles rounded and bullnosed*”.
- 2.2 At exterior corner where wall tile is installed, provide continuous vertical bullnosed type profile “RONDEC” schluter trim, with 6mm radius, integrated trapezoid – perforated anchoring leg and integrated grout joint spacer. Finish to be EB Brushed Stainless Steel Type 304 = V2A. Refer to drawing AR.1 (copy attached) for further clarification.

3. MECHANICAL

- 3.1 Subject to the General Conditions and general specifications, the details and the conformity with the standard intent of the drawings and specification, the following items are approved as equal, except as otherwise noted. Ensure equal product meets or exceeds the performance in all respects of the original product specified.

Approved Equals:

District Sales Co

- Faucets Commercial, Moen
- Tub/Showers; Aquatic
- Gas Venting; Centrotherm
- Backflow Preventors; Beeco
- Wall Mounts/Carriers/Trap Seal Primers; Hose Bibs/Water Hammer/Arrestors/Interceptors/ Floor & Roof Drains; Mifab
- PP-RCT ISCO Polypropylene Piping Systems
- Emergency Fixtures/TMV/Wash Fountains; Bradley

Frontier Plumbing & Heating Supply

- Fixtures; Delta, Toto
- Showers; Altrek, Maax

- Water Heaters; AO Smith, Bradford White
- Drainage; Zurn, Wade
- Expansion Tank; Flexcon

Emco

- Crane (Discontinued); Kohler, Mansfield, Mainline
- Bermis; Centoco
- Powers (Trim); Delta, Symmons, Chicago Faucets
- Rinnai; Rheem, Novanni
- J.R. Smith, Woodford; Watts
- Watts (expansion tanks); Flexcon
- Bell & Gossett; Grundfos

Emco

- Price; Titus
- Greenheck; Twin City Fans
- Airolite; Ventex

4. ELECTRICAL

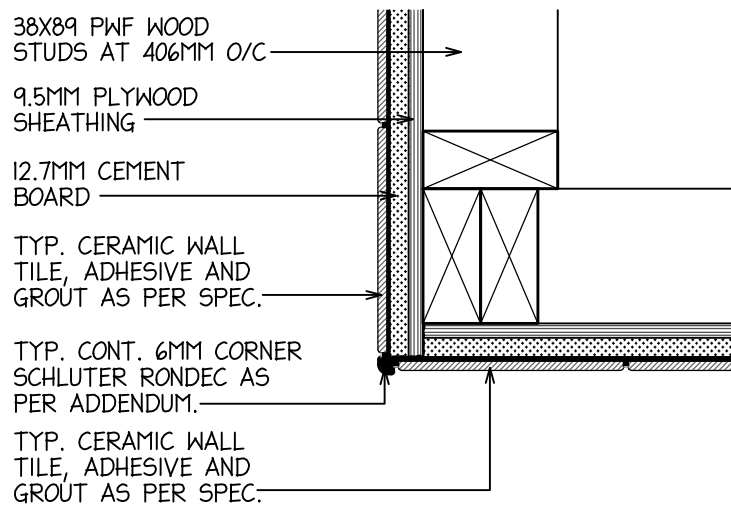
4.1 Reference Det. 3/E-1:

- .1 Delete the specified treated planks.
- .2 Change the ribbon to yellow with continuous “CAUTION ELECTRICAL” marking. Lower this ribbon to 450mm below finished grade.
- .3 Change “conduit” in this detail to “tech cable”.

4.2 Approved Equals - light fixtures

1. Type 1: Phillips #FSS455L840-UNV.
2. Type 2: Kenall #MLHA8-4-8-R-MW-PP-45L40K-DCC-DV.
3. Type 4: Kenall #MS11FL-PP-DB-20L40K-DCC-DV.
4. Type 5: Kenall #MLHA8-24-R-MW-PP-45L40K-DCC-DV.
5. Type E2: Emergilite #EF40DM-LM.
6. Emergency lighting unit: Emergilite #24ESL20U-2LM/440.0635-E.

*****END OF ADDENDUM #2*****



① PLAN DETAIL- TYP.
WALL TILE CORNER TRIM

1:5

MAURICE SOULODRE
ARCHITECT LTD
1815C LORNE AVE
SASKATOON, SK S7H 1Y5
TEL (306) 955-0333
FAX (306) 955-0549
EMAIL soularch@sasktel.net

PROJECT
SERVICE CENTRE REPLACEMENT
MEADOW LAKE PROVINCIAL PARK
SANDY BEACH CAMPGROUND

DRAWING
WALL TILE CORNER TRIM

SCALE 1:5
FILE 3556C
DATE 02-05-2017
DESIGN MS
DRAWN DU
DWG. NO. **AR.1**