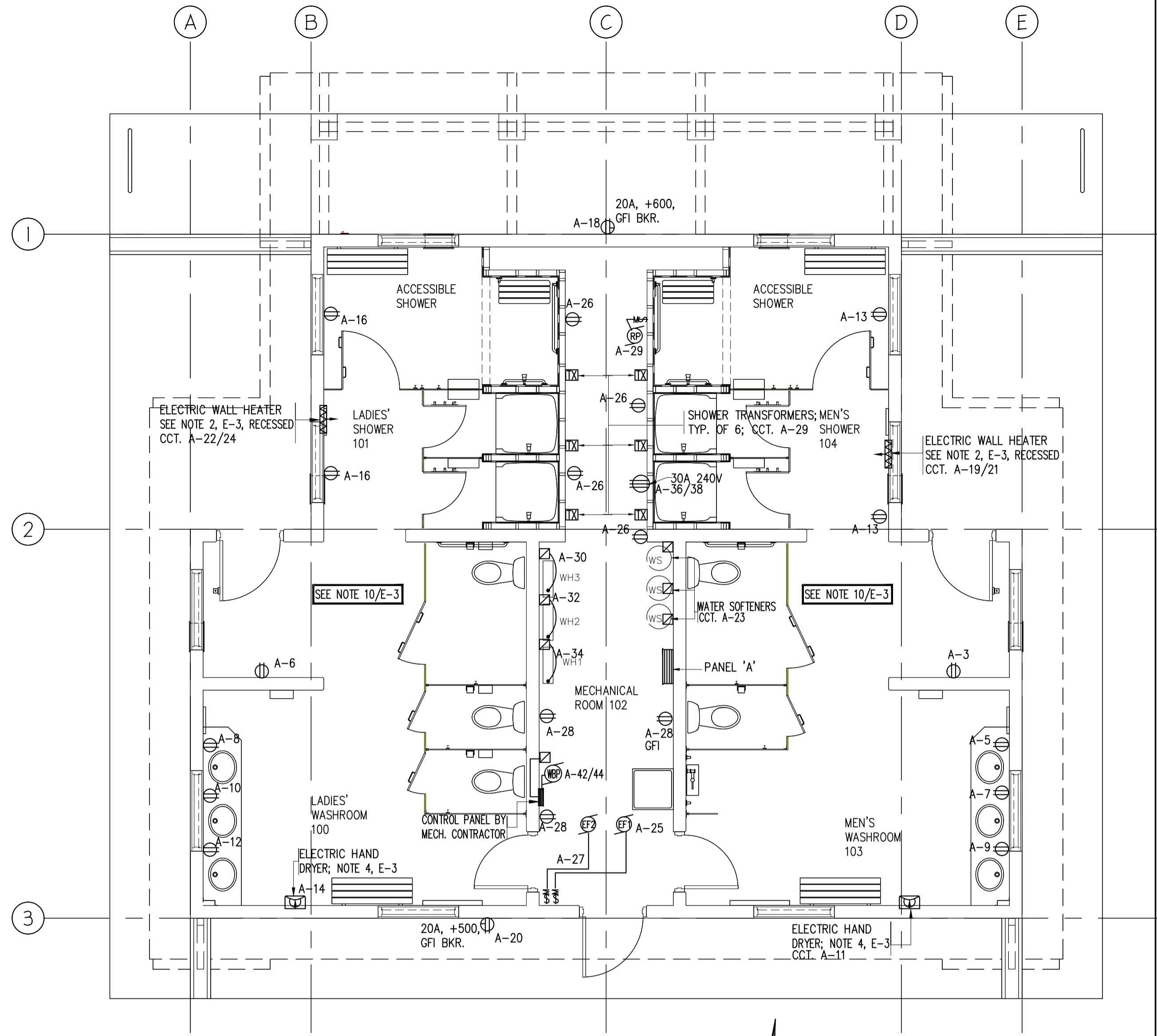
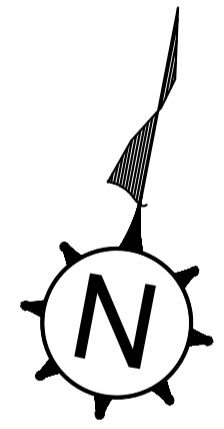
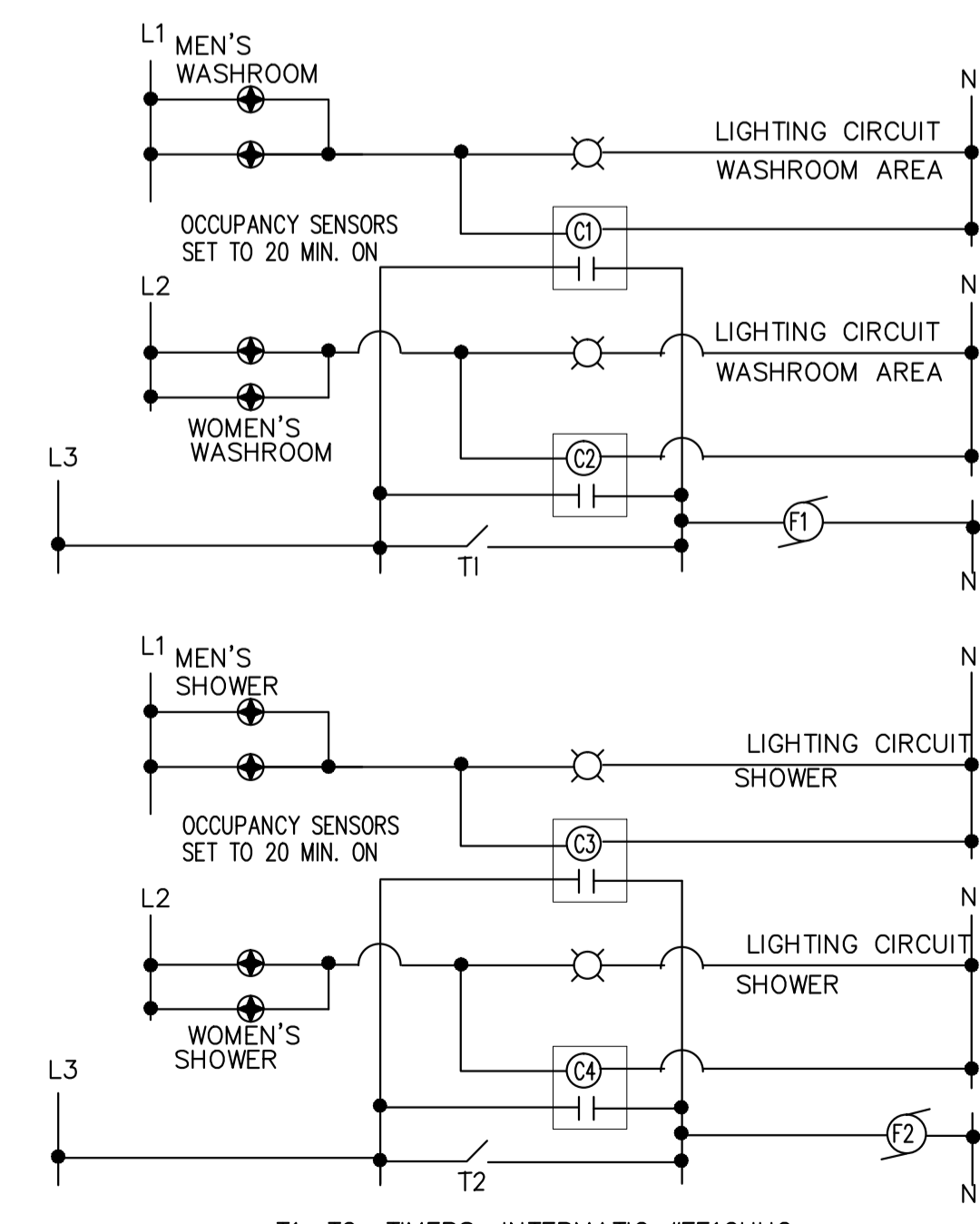
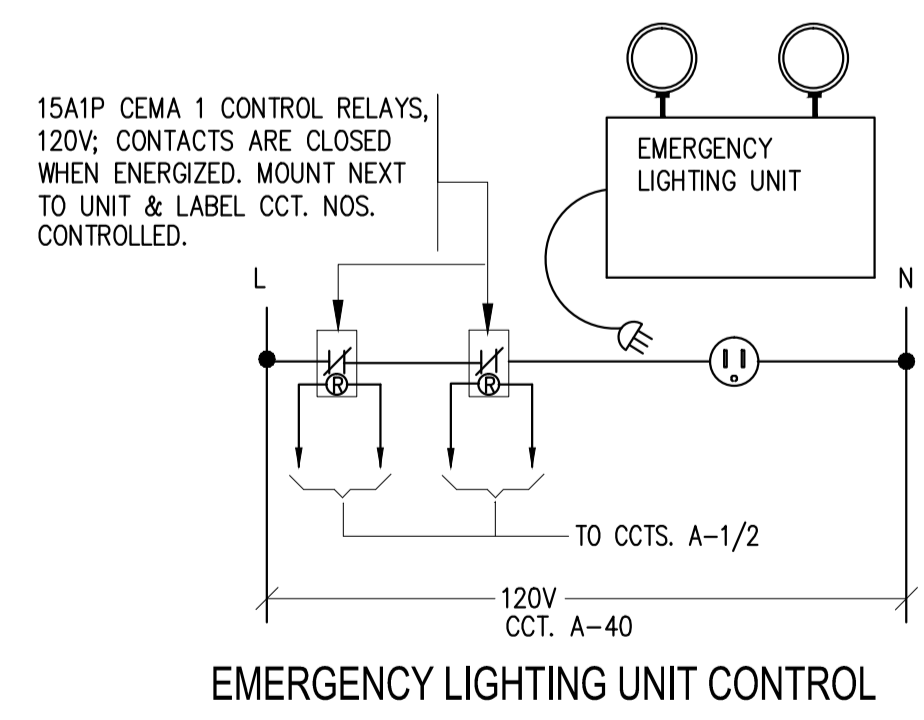
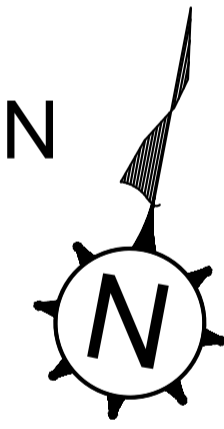


**MAIN FLOOR PLAN LIGHTING LAYOUT**  
SCALE 1:50



**MAIN FLOOR PLAN POWER LAYOUT**  
SCALE 1:50



T1, T2: TIMERS; INTERMATIC #FF12HHC SWITCH FOR MANUAL FAN OPERATION  
C1, C2, C3, C4 = 30A1P CEMA 1 CONTACTORS, 120V COIL  
⊕ = OCCUPANCY SENSOR; SET TO 20 MIN. ON

**LIGHT & FAN CONTROL SCHEMATIC**

**NOTES:**

- THIS PLAN WAS PREPARED FOR THE GOVERNMENT'S INTERNAL PURPOSES ONLY. THE GOVERNMENT DOES NOT WARRANT THAT THIS PLAN IS APPROPRIATE FOR ANY OTHER PURPOSE OR LOCATION. NEITHER THE MINISTER NOR THE GOVERNMENT ACCEPTS ANY RESPONSIBILITY FOR ANY LOSSES OR DAMAGES ARISING FROM ANYONE USING THIS PLAN. THE USER MUST ENSURE THAT ANYTHING BUILT FROM THIS PLAN IS ADEQUATE AND SAFE FOR THE USER'S PARTICULAR SITE CONDITIONS. THIS SHALL INCLUDE, BUT SHALL NOT BE LIMITED TO, ALL FOUNDATION, STRUCTURAL SAFETY, AND ANY OTHER APPLICABLE REQUIREMENTS.
- THE USER SHALL ALSO ENSURE THAT THIS PLAN WILL SUIT THE PARTICULAR SITE AND COMPLY WITH ANY OTHER RELEVANT FEDERAL, PROVINCIAL OR MUNICIPAL REGULATIONS AND CODES WHICH MAY APPLY AT THE USER'S SITE.
- THE LOCATION OF THE UNDERGROUND SERVICES AS SHOWN IS APPROXIMATE ONLY. OTHER UNKNOWN SERVICES MAY EXIST IN THE VICINITY. PLEASE CHECK WITH THE APPROPRIATE UTILITY COMPANY AND THE PARK/SITE MAINTENANCE SUPERVISOR OR REPRESENTATIVE.
- IT IS THE RESPONSIBILITY OF ANYONE USING THIS PLAN FOR DESIGN PURPOSES TO VERIFY ALL INFORMATION SHOWN ON THIS PLAN. IT IS THE USER'S RESPONSIBILITY TO IDENTIFY ANY UTILITY INFRASTRUCTURE.

ASSOCIATION OF PROFESSIONAL ENGINEERS OF SASKATCHEWAN  
CERTIFICATE OF AUTHORIZATION  
HALL ENGINEERING CO. LTD.  
NUMBER 2  
PERMISSION TO CONSULT HELD BY:  
DISCIPLINE ELECTRICAL SASK. REG. No. 2797 SIGNATURE W.D. Hall

**HALL ENGINEERING LTD.**  
CONSULTING ELECTRICAL ENGINEER  
413 - 38RD STREET WEST  
SASKATOON, S4S 3T1 S7S  
PHONE (306) 964-2772  
FAX (306) 964-2772  
E-MAIL hall.eng@shaw.ca



ISSUED FOR TENDER AND CONSTRUCTION APR. 13/17

**MAURICE SOULODRE**  
ARCHITECT LTD  
1815C LORNE AVE  
SASKATOON, SK S7H 1Y5  
TEL (306) 955-0333  
FAX (306) 955-0549  
EMAIL soularch@sasktel.net

PROJECT  
SERVICE CENTRE REPLACEMENT  
**MEADOW LAKE PROVINCIAL PARK SANDY BEACH CAMPGROUND**  
MINISTRY OF PARKS, CULTURE AND SPORT  
PARKS SERVICE BRANCH  
2ND FLOOR 3211 ALBERT STREET  
REGINA, SASKATCHEWAN  
S4S 5W6  
DRAWING  
**MAIN FLOOR PLAN ELECTRICAL LAYOUT & DETAILS**

SCALE: 1:50 A1 SHEET  
PLOT: APR. 13/17  
FILE: 3556C  
ENG. FILE: 1610  
DATE: APR. 13/17  
DESIGN: WDH  
DRAWN: CAL

	<b>MEADOW LAKE PROVINCIAL PARK SANDY LAKE CAMPGROUND</b>	<small>LOCATION</small>
	SERVICE CENTRE REPLACEMENT MAIN FLOOR PLAN, ELECTRICAL LAYOUT	PLAN NO. SHEET 23 OF 24 1008-30-F22-15C

DRAWING NO. **E.2**